



TRUCK & BUS TIRES

PRODUCT RANGE



THE SOLE COMPANY FULLY FOCUSED ON THE INDUSTRIAL BUSINESS WITH MORE THAN 100 YEARS OF EXPERIENCE

Prometeon Tyre Group is the only tire company solely focused on the Industrial sector, for the transport of goods and people, and the Agro and OTR segments. Prometeon's is a multi-tier offering with a product portfolio that includes the PIRELLI brand, under license, as well as the NEXTROAD brand.

The Group has four factories (two in Brazil, one in Egypt, one in Turkey) and three Research and Development Centers (Italy, Brazil, Turkey) and one Development Center in Egypt which represent the heart of product innovation.

The Prometeon Group has over 7,000 employees located across all five continents.

OUR PRODUCT OFFER TO MAXIMIZE FLEET PERFORMANCES

Prometeon's PIRELLI branded range includes high performance products designed to improve the efficiency of each and every fleet, increasing driver and passengers comfort and optimizing running costs. Therefore, each product we develop is engineered with our commitment to quality and safety. Tires are developed with the objective to offer the right solution taking into account the type of transport and road surface, in view of maximum benefit for the customer. Those parameters have a direct effect on all tire selection variables, both technical (materials utilized, design, etc.) and financial (running costs, length of first life and useful life, etc.). The combination of application and vehicle type provides optimum tire specifications for each use.

TABLE OF CONTENTS

RANGE OVERVIEW	pag.	4
UNIQUE INNOVATIVE TECHNOLOGICAL PLATFORM THROUGH ALL TIRE LINES	pag.	6
LONG HAUL	pag.	8
REGIONAL	pag.	14
COACH	pag.	26
REFUSE / SANITATION	pag.	28
MIXED SERVICE	pag.	30
TIRE MARKINGS	pag.	36
TECHNICAL TABLES LEGEND	pag.	37
INTERNATIONAL LOAD AND SPEED TABLES	pag.	38
MEDIUM TRUCK & BUS TIRES LOAD INFLATION TABLES	pag.	39
WARRANTY POLICY	pag.	44

RANGE OVERVIEW

ON



LONG HAUL



Product designed to provide low fuel consumption and total cost of ownership optimization. The best balance between mileage and fuel efficiency is found in long distance and highway routes.



REGIONAL



Product designed to help deliver high mileage in high scrub regional applications and high level of safety on all road conditions.



COACH



Specifically designed for comfort and safety in passenger transport, over medium and long distances.



REFUSE / SANITATION



Specifically Designed for Refuse / Sanitation, High Scrub, Short Haul Applications.

ON-OFF



MIXED SERVICE



For mixed use on roads, on construction sites and under aggressive tread-wear condition.

STEER/ALL POSITION

DRIVE

TRAILER

H89 PLUS

H89 DRIVE PLUS

H89 TRAILER

H94 DRIVE

R89

R89 DRIVE

R89 TRAILER

H89

H89 DRIVE

FH15

R89 CS DRIVE

H94 COACH

R89 DRIVE

R89

MG89

FG:01 II

TG85

AP05

FG85



3SB

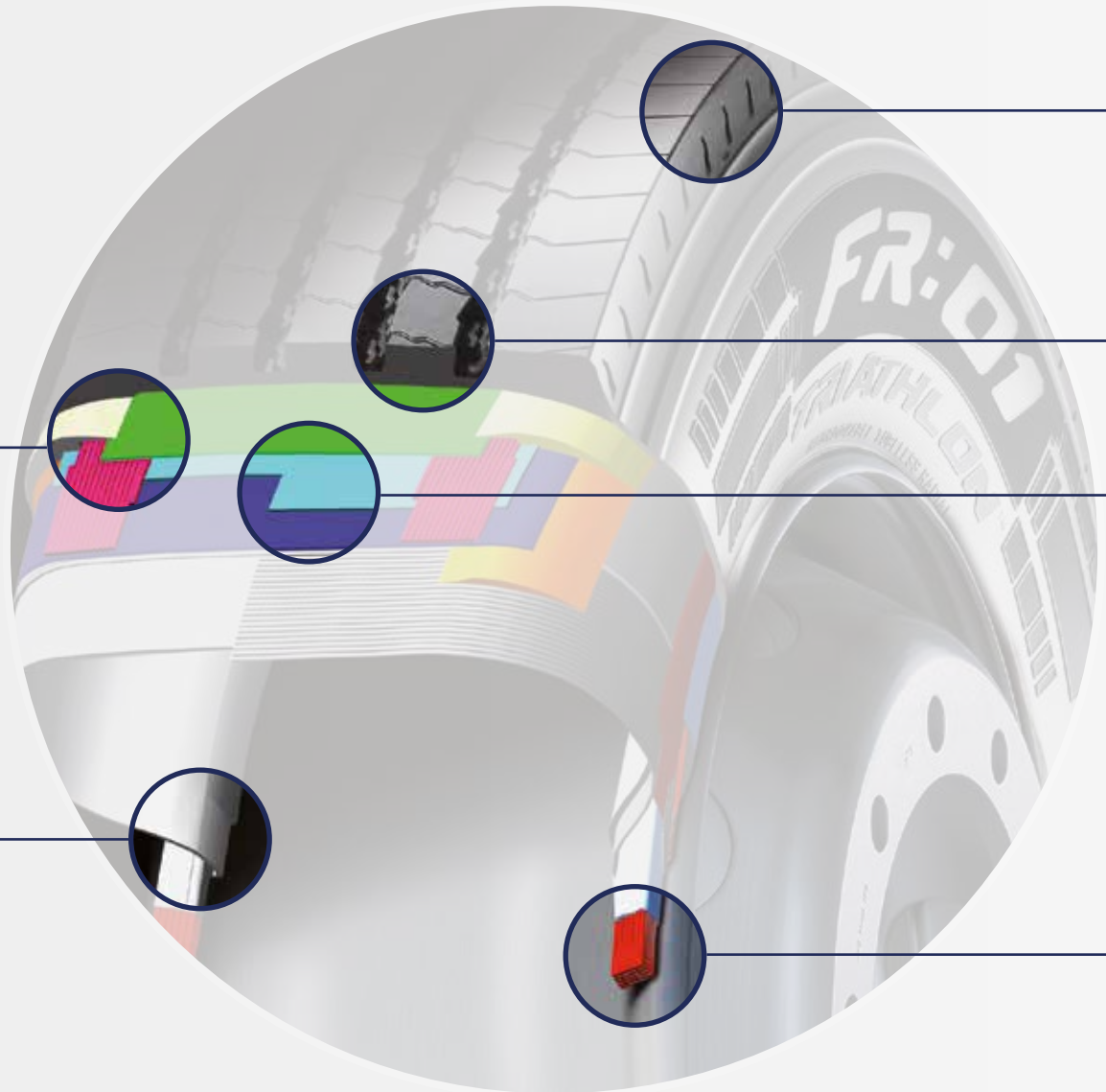
SATT™
Spiral Advanced Technology for Truck

(Pirelli Patent)

THREE SANDWICH BELTS

- Enhanced even wear
- Extended tire life
- Retreadability
- Handling

Zero Degree belt (Pirelli Patent)



BWC

BEAD WRAPPED CHAFER

- Increased resistance
- Excellent retreadability

PLATFORM THROUGH ALL TIRE LINES



RSR

ROTATED SHOULDER RIB (Pirelli Patent)

Innovative shoulder tread contour allows correct distribution of footprint contact pressure

- Enhanced even wear
- High mileage



DLTC/HSCC

DUAL LAYER TREAD COMPOUND

High Silica Formulation Compound (Pirelli patent)

- Wet grip
- Low heat generation for better rolling resistance and integrity
- Better resistance at low temperature



FRC

FULL RUBBERIZED CORDS

- Great fatigue resistance



HBW

HEXAGONAL BEAD WIRE

- High flexibility for easy mounting
- Bead thermal stability and durability
- Retreadability

LONG HAUL



H89 PLUS



H89 DRIVE PLUS



H94 DRIVE



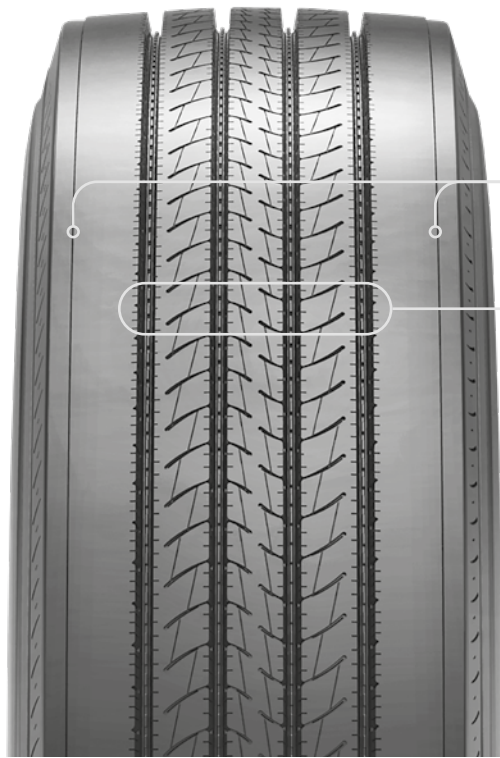
H89 TRAILER





H89 PLUS

PREMIUM FUEL EFFICIENT
LONG HAUL - STEER - ALL POSITION



- ENHANCED STEERING PRECISION AND EXCELLENT PERFORMANCE IN EVERY WEATHER CONDITION**
Proprietary SATT Technology and improved compound formulation deliver superior handling and vehicle control at all times.
- NEW DECOUPLING GROOVE**
 A new decoupling groove design protects the footprint from lateral efforts to ensure even wear.
- HIGH MILEAGE PERFORMANCE AND EVEN WEAR**
 New tread pattern with siped ribs and widened tread profile provide an optimized footprint, resulting in even wear and **long tread life**.
- FUEL EFFICIENCY AND DURABILITY**
 New tread and base compounds deliver long tread life minimizing heat generation, ensuring excellent retreadability while complying with **EPA SmartWay®** verified fuel efficiency requirements.



TIRE SIZE	PRODUCT NUMBER	INTERNATIONAL LOAD INDEX SPEED CODE	LOAD RANGE PLY RATING	LOADED RADIUS in. (mm)	OVERALL DIAMETER in. (mm)	OVERALL WIDTH in. (mm)	APPROVED RIMS in. (mm)	MINIMUM DUAL SPACING in. (mm)	REVS PER MILE rpm (rpk)	TREAD DEPTH 32nds (mm)	MAX SPEED mph (kph)*	MAX TIRE LOAD		SMARTWAY
												SINGLE lbs. psi (kg kPa)	DUAL lbs. psi (kg kPa)	
295/75R22.5	3755900	144/141 L	G/14	18.6	40.0	11.4	<u>8.25</u> , 9.00	13.2	519	18/32	75	6175/110	5675/110	✓
				(473)	(1017)	(290)	(335)	(324)	(14.3)	(120)	(2800/760)	(2575/760)		
295/75R22.5	3755800	149/146 L	H/16	18.5	40.0	11.4	<u>8.25</u> , 9.00	13.2	519	18/32	75	7160/123	6610/123	✓
				(472)	(1017)	(290)	(335)	(324)	(14.3)	(120)	(3250/850)	(3000/850)		
11R22.5	3756100	146/143 L	H/16	19.3	41.3	11.6	<u>8.25</u> , 7.50	12.5	504	18/32	75	6610/120	6005/120	✓
				(471)	(1048)	(294)	(318)	(313)	(14.3)	(120)	(3000/830)	(2725/830)		

Note: Rim underlined is measuring rim
(*) Exceeding the lawful speed limit is neither recommended nor endorsed.

H89 DRIVE PLUS

LONG HAUL/ SUPER REGIONAL FUEL EFFICIENT DRIVE

SATTTM
Special Advanced Technology for Trucks



- EXCELLENT PERFORMANCE IN ALL WEATHER CONDITIONS**
 Longitudinal and transversal groove geometry as well as casing dimensioning provide **excellent grip and traction** in braking and acceleration throughout the life of the tire.
- FUEL EFFICIENCY AND DURABILITY**
 New tread and base compounds deliver low rolling resistance and low heat generation, ensuring excellent retreadability and compliance with **EPA SmartWay[®]** verified fuel efficiency requirements.
- OUTSTANDING PRECISION AND DRIVING COMFORT**
 The optimized tread pattern geometry together with tread compound properties ensure **uniform wear** and **comfortable handling**.
- HIGH MILEAGE**
 Tire profile and the particular shoulder design prevent impact damage allowing a uniform distribution of torque across the footprint, resulting in even wear and **long tread life**.



TIRE SIZE	PRODUCT NUMBER	INTERNATIONAL LOAD INDEX SPEED CODE	LOAD RANGE PLY RATING	LOADED RADIUS in. (mm)	OVERALL DIAMETER in. (mm)	OVERALL WIDTH in. (mm)	APPROVED RIMS in. (mm)	MINIMUM DUAL SPACING in. (mm)	REVS PER MILE rpm (rpk)	TREAD DEPTH 32nds (mm)	MAX SPEED mph (kph)*	MAX TIRE LOAD		M+S	SMARTWAY
												SINGLE lbs. psi (kg kPa)	DUAL lbs. psi (kg kPa)		
295/75R22.5	3756000	144/141 L	G/14	18.9	40.6	11.4	<u>8.25</u> , 9.00	13.2	515	26/32	75	6175/110	5675/110	✓	✓
				(479)	(1031)	(290)		(335)	(320)	(20.6)	(120)	(2800/760)	(2575/760)		
11R22.5	3756200	144/142 L	G/14	19.4	41.8	11.6	<u>8.25</u> , 7.50	12.5	500	26/32	75	6175/105	5840/105	✓	✓
				(494)	(1061)	(295)		(318)	(311)	(20.6)	(120)	(2800/720)	(2650/720)		

Note: Rim underlined is measuring rim
 (*) Exceeding the lawful speed limit is neither recommended nor endorsed.



H94 DRIVE

ULTRA FUEL EFFICIENT
LONG HAUL - SUPER REGIONAL DRIVE



- **LONG TREAD LIFE AND LOW ROLLING RESISTANCE**

The DLTC - Dual Layer Tread Compound together with extra-wide tread profile deliver the ideal performance balance between **long tread life** and **low rolling resistance**.

- **FUEL EFFICIENCY AND DURABILITY**

Specialized under-tread compound provide low rolling resistance and low heat generation, ensuring excellent retreadability

- **OUTSTANDING IN ALL WEATHER CONDITIONS**

Unique tread pattern design combined with a full depth siping structure deliver **excellent grip** and **traction** in braking and acceleration throughout the life of the tire.

- **TOP HANDLING IN A QUIET RIDE**

Proprietary SATT structure combined with the unique tread pattern design deliver a unique driving experience for many miles spent in exceptional **acoustic comfort**.



TIRE SIZE	PRODUCT NUMBER	INTERNATIONAL LOAD INDEX SPEED CODE	LOAD RANGE PLY RATING	LOADED RADIUS in. (mm)	OVERALL DIAMETER in. (mm)	OVERALL WIDTH in. (mm)	APPROVED RIMS in. (mm)	MINIMUM DUAL SPACING in. (mm)	REVS PER MILE rpm (rpk)	TREAD DEPTH 32nds (mm)	MAX SPEED mph (kph)*	MAX TIRE LOAD		M+S
												SINGLE lbs. psi (kg kPa)	DUAL lbs. psi (kg kPa)	
295/75R22.5	3756300	144/141 L	G/14	18.9	40.6	11.4	<u>8.25</u> , 9.00	13.2	515	25/32	75	6175/110	5675/110	√
				(479)	(1031)	(290)		(335)	(320)	(19.8)	(120)	(2800/760)	(2575/760)	
11R22.5	3756400	144/142 L	G/14	19.4	41.8	11.6	<u>8.25</u> , 7.50	12.5	500	24/32	75	6175/105	5840/105	√
				(494)	(1061)	(295)		(318)	(311)	(19.1)	(120)	(2800/720)	(2650/720)	

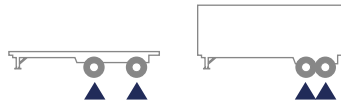
Note: Rim underlined is measuring rim
(*) Exceeding the lawful speed limit is neither recommended nor endorsed.

H89 TRAILER

LONG TREAD LIFE TIRE FOR LONG-HAUL AND REGIONAL



- CASING DURABILITY**
 Made possible by **3SB SATT Construction** in tread crown area, tread pattern with **stone ejectors** in **every groove** and **enhanced compound formulation in bead area** to improve heat dispersion to improve retreadability.
- FUEL EFFICIENCY**
 Delivered by **improved tread compound** designed to deliver **EPA SmartWay®** verified Rolling Resistance compliance.
- LONG TREAD LIFE**
 Enhanced by **optimized tire profile, shoulder protection** through support groove and **innovative tread compound formulation**.
- STABLE HANDLING ON EVERY ROAD CONDITION**
 Granted by **tread pattern with zig-zag groove design, M+S tread compound** and **4 wide longitudinal grooves**.



TIRE SIZE	PRODUCT NUMBER	INTERNATIONAL LOAD INDEX SPEED CODE	LOAD RANGE PLY RATING	LOADED RADIUS in. (mm)	OVERALL DIAMETER in. (mm)	OVERALL WIDTH in. (mm)	APPROVED RIMS in. (mm)	MINIMUM DUAL SPACING in. (mm)	REVS PER MILE rpm (rpk)	TREAD DEPTH 32nds (mm)	MAX SPEED mph (kph)*	MAX TIRE LOAD		SMARTWAY	M+S
												SINGLE lbs. psi (kg kPa)	DUAL lbs. psi (kg kPa)		
295/75R22.5	3263700	144/141 M	G/14	18.4 (466.5)	39.5 (1004)	11.3 (288)	<u>8.25</u> , 9.00	13.2 (335)	510 (317)	12/32 (9.5)	81 (130)	6175/110 (2800/760)	5675/110 (2575/760)	√	√

Note: Rim underlined is measuring rim
 (*) Exceeding the lawful speed limit is neither recommended nor endorsed.

REGIONAL



R89



H89



**R89
19.5**



**R89
DRIVE**



**R89
CS DRIVE**



**H89
DRIVE**



**R89
DRIVE
19.5**



FH15



**H89
TRAILER**



**R89
TRAILER**

R89

REGIONAL ALL POSITION

SATT™
Special Advanced Technology for Trucks



R89 Tread B (**)

• **OPTIMIZED GROOVE CONTOUR**

Protected longitudinal grooves provide exceptional resistance to stone drilling for improved **tire life and retreadability**

• **SOLID SHOULDER RIB**

Robust and wide longitudinal ribs together with enhanced tread compound provide outstanding resistance in high scrub operations and **even wear**

• **DEEP TREAD FOR ALL WHEEL POSITIONS**

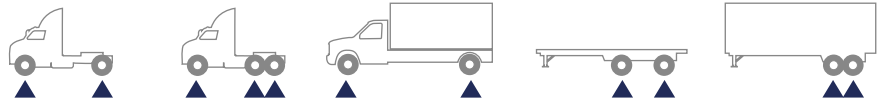
Tread pattern depth delivers exceptional braking and traction performance throughout the whole **life of the tire**

• **OUTSTANDING TREAD DESIGN**

Four Zig-Zag grooves of innovative profile help reducing the concentration of stress at their base, improving wear regularity and removal mileage

• **FUEL EFFICIENCY**

Innovative tread compound withstand the conditions of high scrub operation while complying with **EPA 's Rolling Resistance targets**.



TIRE SIZE	PRODUCT NUMBER	INTERNATIONAL LOAD INDEX SPEED CODE	LOAD RANGE PLY RATING	LOADED RADIUS in. (mm)	OVERALL DIAMETER in. (mm)	OVERALL WIDTH in. (mm)	APPROVED RIMS in. (mm)	MINIMUM DUAL SPACING in. (mm)	REVS PER MILE rpm (rpk)	TREAD DEPTH 32nds (mm)	MAX SPEED mph (kph)*	MAX TIRE LOAD	
												SINGLE lbs. psi (kg kPa)	DUAL lbs. psi (kg kPa)
275/70R22.5 (**)	3886300	148/145 M	J/18	17.4	37.7	11.1	<u>8.25</u> , 7.50	11.9	551	17/32	81	6940/130	6395/130
				(442)	(957.0)	(283)		(303)	(344)	(13.5)	(130)	(3150/900)	(2900/900)
295/75R22.5	3462100	149/146 L	H/16	18.6	40.1	11.4	<u>8.25</u> , 9.00	13.2	519	21/32	75	7160/123	6610/123
				(473)	(1019)	(290)		(335)	(324)	(16.7)	(120)	(3250/850)	(3000/850)
315/80R22.5	3886000	158/156 M	L/20	19.8	42.6	12.5	<u>9.00</u> , 9.75	13.8	489	20/32	81	9370/130	8820/130
				(502)	(1081)	(317)		(351)	(305)	(15.9)	(130)	(4250/900)	(4000/900)
285/75R24.5	3830700	147/144 L	H/16	19.3	41.4	11.3	7.50, <u>8.25</u> , 9.00	12.5	487	21/32	75	6780/120	6175/120
				(491)	(1052)	(288)		(318)	(304)	(16.7)	(120)	(3075/825)	(2800/825)
11R22.5	3744200	144/142 L	G/14	19.4	41.5	11.5	<u>8.25</u> , 7.50	12.5	499	22/32	75	6175/105	5840/105
				(493)	(1054)	(293)		(318)	(312)	(17.5)	(120)	(2800/720)	(2650/720)
11R22.5	3271700	146/143 L	H/16	19.3	41.5	11.5	<u>8.25</u> , 7.50	12.5	501	22/32	75	6610/120	6005/120
				(490)	(1054)	(293)		(318)	(313)	(17.5)	(120)	(3000/830)	(2725/830)

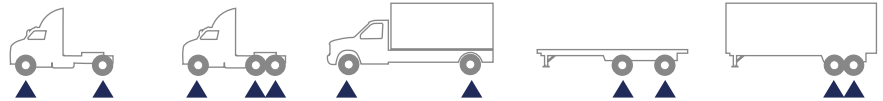
Note: Rim underlined is measuring rim - (*) Exceeding the lawful speed limit is neither recommended nor endorsed.
 ** 275/70R22.5 LR J can only be used on either 7.50" or 8.25" wheel. It cannot be used on 9" wheel.

H89

REGIONAL ALL POSITION



- WATER EVACUATION AND ENHANCED STEERING PRECISION**
 Granted by the tire tread pattern design with **4 grooves and robust longitudinal ribs**, together with **innovative tread compound**.
- HIGH MILEAGE PERFORMANCE AND EVEN WEAR**
 Enhanced by the tire construction and tread profile designed to deliver an **optimized footprint** resulting in **even wear and long tread life**.
- STONE TRAPPING PREVENTION**
 Thanks to the **grooves profile** and the **geometry of the ejectors**.
- OPTIMIZED FOOTPRINT AND FUEL SAVINGS**
 The tread pattern design assures **uniform load distribution** across the footprint that, together with **innovative compounds**, ensures **EPA SmartWay® verified fuel efficiency**.



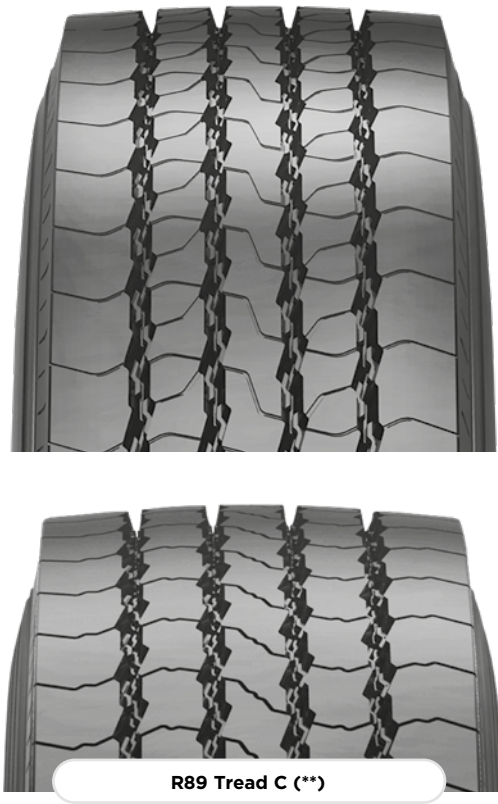
TIRE SIZE	PRODUCT NUMBER	INTERNATIONAL LOAD INDEX SPEED CODE	LOAD RANGE PLY RATING	LOADED RADIUS in. (mm)	OVERALL DIAMETER in. (mm)	OVERALL WIDTH in. (mm)	APPROVED RIMS in. (mm)	MINIMUM DUAL SPACING in. (mm)	REVS PER MILE rpm (rpk)	TREAD DEPTH 32nds (mm)	MAX SPEED mph (kph)*	MAX TIRE LOAD	
												SINGLE lbs. psi (kg kPa)	DUAL lbs. psi (kg kPa)
11R24.5	3264000	149/146 M	H/16	20.3	43.4	11.1	<u>8.25</u> , 7.50	12.5	465	19/32	81	7160/120	6610/120
				(516)	(1102)	(282)							

Note: Rim underlined is measuring rim
 (*) Exceeding the lawful speed limit is neither recommended nor endorsed.

R89 19.5

REGIONAL ALL POSITION

SATT™
Special Advanced Technology for Trucks



• **OPTIMIZED GROOVE CONTOUR**

Protected longitudinal grooves provide exceptional resistance to stone drilling for improved **tire life and retreadability**

• **SOLID SHOULDER RIB**

Robust and wide longitudinal ribs together with enhanced tread compound provide outstanding resistance in high scrub operations and **even wear**

• **DEEP TREAD FOR ALL WHEEL POSITIONS**

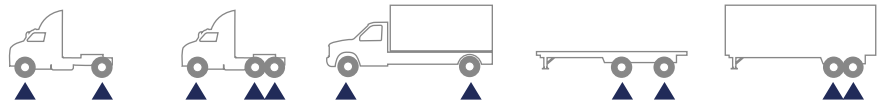
Tread pattern depth delivers exceptional braking and traction performance throughout the whole **life of the tire**

• **OUTSTANDING TREAD DESIGN**

Four Zig-Zag grooves of innovative profile help reducing the concentration of stress at their base, improving wear regularity and removal mileage

• **FUEL EFFICIENCY**

Innovative tread compound withstand the conditions of high scrub operation



R89 Tread C (**)

TIRE SIZE	PRODUCT NUMBER	INTERNATIONAL LOAD INDEX SPEED CODE	LOAD RANGE PLY RATING	LOADED RADIUS in. (mm)	OVERALL DIAMETER in. (mm)	OVERALL WIDTH in. (mm)	APPROVED RIMS in. (mm)	MINIMUM DUAL SPACING in. (mm)	REVS PER MILE rpm (rpk)	TREAD DEPTH 32nds (mm)	MAX SPEED mph (kph)*	MAX TIRE LOAD	
												SINGLE lbs. psi (kg kPa)	DUAL lbs. psi (kg kPa)
225/70R19.5 (**)	3847300	128/126 N	G/14	15.1	32.1	9.1	<u>6.75</u> 6.00	10.0	644	16/32	87	3970/110	3750/110
				(383)	(816)	(232)		(254)	(402)	(12.7)	(140)	(1800/760)	(1700/760)
245/70R19.5	3886400	136/134 M	H/16	15.4	33.3	9.9	<u>7.50</u> 6.75	11.0	625	16/32	81	4940/120	4675/120
				(392)	(846)	(252)		(279)	(391)	(12.7)	(130)	(2240/825)	(2120/825)
265/70R19.5	3886600	140/138 M	H/16	15.8	34.1	10.6	<u>7.50</u> 8.25	11.6	611	16/32	81	5510/115	5205/115
				(401)	(867)	(269)		(295)	(382)	(12.7)	(130)	(2500/790)	(2360/790)

Note: Rim underlined is measuring rim
 (*) Exceeding the lawful speed limit is neither recommended nor endorsed.

R89 DRIVE

REGIONAL OPEN SHOULDER DRIVE

SATT™
Special Advanced Technology for Trucks



- LONG TREAD LIFE & EXCELLENT RETREADABILITY**
 Low rolling resistance tread compound together with under-tread deliver **long tread life** while minimizing the generation of heat from operation, ensuring **excellent retreadability**
- EXCELLENT PERFORMANCE IN ALL WEATHER CONDITIONS**
 Longitudinal and transversal groove geometry as well as casing dimensioning provide **excellent grip** and **traction** in braking and acceleration throughout the life of the tire
- OUTSTANDING DURABILITY**
 The optimized tread pattern geometry ensures protection to the tread blocks, significantly limiting lug base damage and tearing while **improving retreadability**
- HIGH MILEAGE**
 Deep lug tread design delivers high mileage and value for the whole life of the tire



TIRE SIZE	PRODUCT NUMBER	INTERNATIONAL LOAD INDEX SPEED CODE	LOAD RANGE PLY RATING	LOADED RADIUS in. (mm)	OVERALL DIAMETER in. (mm)	OVERALL WIDTH in. (mm)	APPROVED RIMS in. (mm)	MINIMUM DUAL SPACING in. (mm)	REVS PER MILE rpm (rpk)	TREAD DEPTH 32nds (mm)	MAX SPEED mph (kph)*	MAX TIRE LOAD		M+S
												SINGLE lbs. psi (kg kPa)	DUAL lbs. psi (kg kPa)	
295/75R22.5	3462300	149/146 L	H/16	18.9	40.7	11.4	<u>8.25</u> , 9.00	13.2	511	31/32	75	7160/123	6610/123	✓
				(480)	(1033)	(290)	(335)	(320)	(24.6)	(120)	(3250/850)	(3000/850)		
315/80R22.5	3886100	158/156 M	L/20	20.0	43.1	12.5	<u>9.00</u> , 9.75	13.8	483	28/32	81	9370/130	8820/130	✓
				(508)	(1094)	(317)	(351)	(302)	(22.2)	(130)	(4250/900)	(4000/900)		
11R22.5	3271800	146/143 L	H/16	19.6	42.0	11.5	<u>8.25</u> , 7.50	12.5	494	30/32	75	6610/120	6005/120	✓
				(497)	(1068)	(293)	(318)	(308)	(23.8)	(120)	(3000/830)	(2725/830)		

Note: Rim underlined is measuring rim
 (*) Exceeding the lawful speed limit is neither recommended nor endorsed.

R89 CS DRIVE

LONG HAUL /REGIONAL DEEP LUG CLOSED SHOULDER DRIVE



- LONG TREAD LIFE & EXCELLENT RETREADABILITY**
 Low rolling resistance tread compound together with under-tread deliver **long tread life** while minimizing the generation of heat from operation, ensuring **excellent retreadability**
- EXCELLENT PERFORMANCE IN ALL WEATHER CONDITIONS**
 Longitudinal and transversal groove geometry as well as casing dimensioning provide **excellent grip** and **traction** in braking and acceleration throughout the life of the tire
- OUTSTANDING PRECISION AND DRIVING COMFORT**
 The optimized tread pattern geometry together with tread compound properties ensure **uniform wear** and **comfortable handling**
- HIGH MILEAGE**
 Deep lug tread design delivers high mileage and value for the original life of the tire



TIRE SIZE	PRODUCT NUMBER	INTERNATIONAL LOAD INDEX SPEED CODE	LOAD RANGE PLY RATING	LOADED RADIUS in. (mm)	OVERALL DIAMETER in. (mm)	OVERALL WIDTH in. (mm)	APPROVED RIMS in. (mm)	MINIMUM DUAL SPACING in. (mm)	REVS PER MILE rpm (rpk)	TREAD DEPTH 32nds (mm)	MAX SPEED mph (kph)*	MAX TIRE LOAD		M+S
												SINGLE lbs. psi (kg kPa)	DUAL lbs. psi (kg kPa)	
295/75R22.5	3797100	149/146 L	H/16	18.9	40.7	11.4	<u>8.25</u> , 9.00	13.2	511	30/32	75	7160/123	6610/123	✓
				(480)	(1034)	(290)								
285/75R24.5	3830800	147/144 L	H/16	19.6	42.0	11.3	7.50, <u>8.25</u> , 9.00	12.5	480	30/32	75	6780/120	6175/120	✓
				(498)	(1066)	(288)								
11R22.5	3797000	146/143 L	H/16	19.6	42.0	11.5	<u>8.25</u> , 7.50	12.5	494	30/32	75	6610/120	6005/120	✓
				(497)	(1068)	(293)								

Note: Rim underlined is measuring rim
 (*) Exceeding the lawful speed limit is neither recommended nor endorsed.

H89 DRIVE

LONG TREAD LIFE TIRED FOR LONG HAUL AND REGIONAL

SATTTM
Spiral Advanced Technology for Tires



- ENHANCED DURABILITY AND LONG TREAD LIFE**
 Made possible by **improved groove size** and **geometry preventing stone retention**.
- TRACTION AND WET BEHAVIOUR**
 Longitudinal and transversal groove geometry ensure **excellent grip**, **water evacuation** and good **acoustic comfort**.
- HIGH MILEAGE**
 The particular shoulder structure and profile prevent impact damage allowing a **uniform distribution of load** and torque resulting in **even wear** and **long tread life**.
- LOW ROLLING RESISTANCE**
 An **optimized footprint area** together with proprietary **high silica compound** formulation achieve **even wear**, **long tread life** while being EPA SmartWay[®] verified and California Air Resources Board (CARB) compliant.



TIRE SIZE	PRODUCT NUMBER	INTERNATIONAL LOAD INDEX SPEED CODE	LOAD RANGE PLY RATING	LOADED RADIUS in. (mm)	OVERALL DIAMETER in. (mm)	OVERALL WIDTH in. (mm)	APPROVED RIMS in. (mm)	MINIMUM DUAL SPACING in. (mm)	REVS PER MILE rpm (rpk)	TREAD DEPTH 32nds (mm)	MAX SPEED mph (kph)*	MAX TIRE LOAD		M+S
												SINGLE lbs. psi (kg kPa)	DUAL lbs. psi (kg kPa)	
11R24.5	3146700	149/146 M	H/16	20.5 (521)	44.0 (1117)	11.2 (284)	<u>8.25</u> , 7.50	12.5 (318)	459 (285)	29/32 (23)	81 (130)	7160/120 (3250/830)	6610/120 (3000/830)	✓

Note: Rim underlined is measuring rim
 (*) Exceeding the lawful speed limit is neither recommended nor endorsed.

R89 DRIVE 19.5

REGIONAL OPEN SHOULDER DRIVE



- **LONG TREAD LIFE & EXCELLENT RETREADABILITY**

Low rolling resistance tread compound together with under-tread deliver **long tread life** while minimizing the generation of heat from operation, ensuring **excellent retreadability**

- **EXCELLENT PERFORMANCE IN ALL WEATHER CONDITIONS**

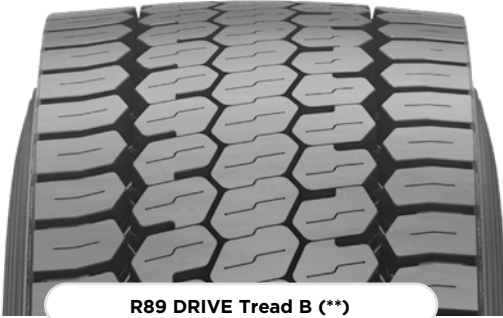
Longitudinal and transversal groove geometry as well as casing dimensioning provide **excellent grip** and **traction** in braking and acceleration throughout the life of the tire

- **OUTSTANDING DURABILITY**

The optimized tread pattern geometry ensures protection to the tread blocks, significantly limiting lug base damage and tearing while **improving retreadability**

- **HIGH MILEAGE**

Deep lug tread design delivers high mileage and value for the whole life of the tire



R89 DRIVE Tread B (**)

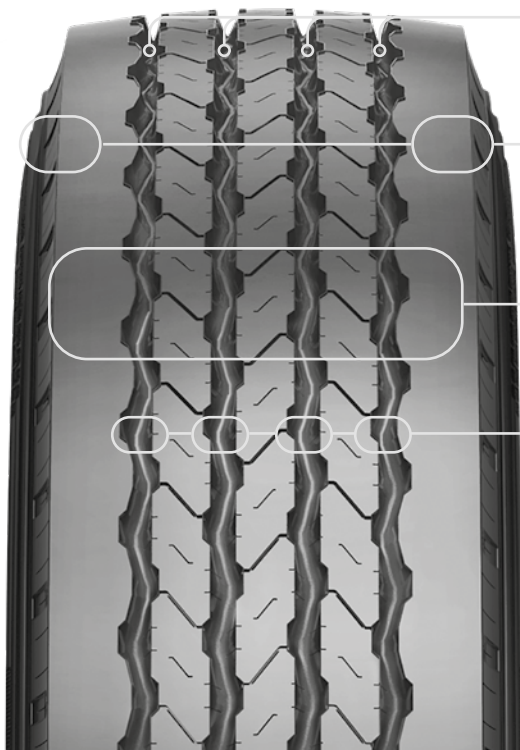


TIRE SIZE	PRODUCT NUMBER	INTERNATIONAL LOAD INDEX SPEED CODE	LOAD RANGE PLY RATING	LOADED RADIUS in. (mm)	OVERALL DIAMETER in. (mm)	OVERALL WIDTH in. (mm)	APPROVED RIMS in. (mm)	MINIMUM DUAL SPACING in. (mm)	REVS PER MILE rpm (rpk)	TREAD DEPTH 32nds (mm)	MAX SPEED mph (kph)*	MAX TIRE LOAD		M+S
												SINGLE lbs. psi (kg kPa)	DUAL lbs. psi (kg kPa)	
225/70R19.5 (**)	3847400	128/126 N	G/14	15.2	32.3	9.1	<u>6.75</u> 6.00	10.0	641	18/32	87	3970/110	3750/110	✓
				(385)	(820)	(232)		(254)	(400)	(14.3)	(140)	(1800/760)	(1700/760)	
245/70R19.5	3886500	136/134 M	H/16	15.4	33.5	9.9	<u>7.50</u> 6.75	11.0	622	19/32	81	4940/120	4675/120	✓
				(394)	(850)	(252)		(279)	(389)	(15.1)	(130)	(2240/825)	(2120/825)	
265/70R19.5	3886700	140/138 M	H/16	15.9	34.3	10.6	<u>7.50</u> 8.25	11.6	607	20/32	81	5510/115	5205/115	✓
				(403)	(872)	(269)		(295)	(379)	(15.9)	(130)	(2500/790)	(2360/790)	

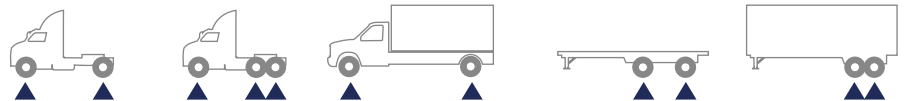
Note: Rim underlined is measuring rim
 (*) Exceeding the lawful speed limit is neither recommended nor endorsed.

FH15™

REGIONAL ALL POSITION TIRE



- OPTIMIZED GROOVE CONTOUR**
 Longitudinal groove geometry provides exceptional stone drilling protection for improved tire life and retreadability
- SOLID SHOULDER RIB**
 Robust and wide longitudinal ribs together with enhanced chip and cut resistant tread compound provide outstanding performance in high scrub operations and regular wear
- TREAD PATTERN FOR ALL WHEEL POSITIONS**
 Tread pattern design delivers exceptional braking and traction performance throughout the whole life of the tire
- OUTSTANDING TREAD DESIGN**
 Four grooves of innovative profile help reducing the concentration of stress at their base, improving wear regularity and removal mileage



TIRE SIZE	PRODUCT NUMBER	INTERNATIONAL LOAD INDEX SPEED CODE	LOAD RANGE PLY RATING	LOADED RADIUS in. (mm)	OVERALL DIAMETER in. (mm)	OVERALL WIDTH in. (mm)	APPROVED RIMS in. (mm)	MINIMUM DUAL SPACING in. (mm)	REVS PER MILE rpm (rpk)	TREAD DEPTH 32nds (mm)	MAX SPEED mph (kph)*	MAX TIRE LOAD	
												SINGLE lbs. psi (kg kPa)	DUAL lbs. psi (kg kPa)
255/70R22.5	3264300	140/137 M	H/16	18,6	40,1	11,4	<u>7.50</u> 8.25	13.2	519	17/32	81	5510/120	5070/120
				(473)	(1019)	(290)		(335)	(324)	(13.5)	(130)	(2500/830)	(2300/830)

Note: Rim underlined is measuring rim
 (*) Exceeding the lawful speed limit is neither recommended nor endorsed.

H89 TRAILER

LONG TREAD LIFE TIRE FOR LONG-HAUL AND REGIONAL



• **CASING DURABILITY**

Made possible by 3SB SATT Construction in tread crown area, tread pattern with stone ejectors in every groove and enhanced compound formulation in bead area to improve heat dispersion to improve retreadability.

• **FUEL EFFICIENCY**

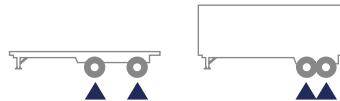
Delivered by improved tread compound designed to deliver EPA SmartWay® verified Rolling Resistance compliance.

• **LONG TREAD LIFE**

Enhanced by optimized tire profile, shoulder protection through support groove and innovative tread compound formulation.

• **STABLE HANDLING ON EVERY ROAD CONDITION**

Granted by tread pattern with zig-zag groove design, M+S tread compound and 4 wide longitudinal grooves.



TIRE SIZE	PRODUCT NUMBER	INTERNATIONAL LOAD INDEX SPEED CODE	LOAD RANGE PLY RATING	LOADED RADIUS in. (mm)	OVERALL DIAMETER in. (mm)	OVERALL WIDTH in. (mm)	APPROVED RIMS in. (mm)	MINIMUM DUAL SPACING in. (mm)	REVS PER MILE rpm (rpk)	TREAD DEPTH 32nds (mm)	MAX SPEED mph (kph)*	MAX TIRE LOAD		M+S
												SINGLE lbs. psi (kg kPa)	DUAL lbs. psi (kg kPa)	
11R22.5	3151000	144/142 M	G/14	19.2	41.4	11.0	<u>8.25</u> , 7.50	12.5	502	18/32	81	6175/105	5840/105	✓
				(488.4)	(1052)	(280)	(318)	(314)	(14.3)	(130)	(2800/720)	(2650/720)		
11R24.5	3150900	149/146 M	H/16	20.2	43.2	11.1	<u>8.25</u> , 7.50	12.5	467	18/32	81	7160/120	6610/120	✓
				(514)	(1098)	(283)	(318)	(290)	(14.3)	(130)	(3250/830)	(3000/830)		

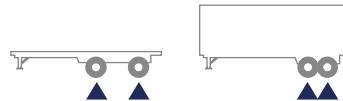
Note: Rim underlined is measuring rim
 (*) Exceeding the lawful speed limit is neither recommended nor endorsed.

R89 TRAILER

LONG TREAD LIFE TIRE



- **INCREASED TREAD WIDTH**
to enhance mileage and groove depth
- **REINFORCED SIDEWALLS**
to **provide resistance to lateral impacts** and abrasion
- **GREAT LATERAL HOLDING AND HIGH TEAR RESISTANCE**
thanks to **4 Zig-zag shape grooves** and robust ribs
- **EVEN WEAR AND HIGH MILEAGE**
optimized tread **profile for a correct distribution** of footprint contact pressure



TIRE SIZE	PRODUCT NUMBER	INTERNATIONAL LOAD INDEX SPEED CODE	LOAD RANGE PLY RATING	LOADED RADIUS in. (mm)	OVERALL DIAMETER in. (mm)	OVERALL WIDTH in. (mm)	APPROVED RIMS in. (mm)	MINIMUM DUAL SPACING in. (mm)	REVS PER MILE rpm (rpk)	TREAD DEPTH 32nds (mm)	MAX SPEED mph (kph)*	MAX TIRE LOAD		M+S
												SINGLE lbs. psi (kg kPa)	DUAL lbs. psi (kg kPa)	
215/75R17.5	3887000	135/133 J	H/16	14.2	30.6	8.5	<u>6.75</u> , 6.00	9.7	680	15/32	68	4805/125	4540/125	✓
				(361)	(777)	(217)	(246)	(425)	(11.9)	(110)	(2180/860)	(2060/860)		
235/75R17.5	3887100	143/141 J	J/18	14.6	31.5	9.6	<u>6.75</u> , 7.50	10.3	661	16/32	68	6005/130	5675/130	✓
				(371)	(800)	(244)	(262)	(413)	(12.7)	(110)	(2725/900)	(2575/900)		
245/70R17.5	3887200	143/141 J	J/18	15.5	33.5	9.9	<u>7.50</u> , 6.75	10.7	623	16/32	68	6005/130	5675/130	✓
				(393)	(850)	(251)	(271)	(389)	(12.7)	(110)	(2725/900)	(2575/900)		

Note: Rim underlined is measuring rim
 (*) Exceeding the lawful speed limit is neither recommended nor endorsed.

COACH



H94 COACH

H94 COACH

LONG HAUL / REGIONAL COACH ALL POSITION



- **LONG TREAD LIFE AND LOW ROLLING RESISTANCE**

The DLTC - Dual Layer Tread Compound deliver the ideal performance balance between **long tread life** and **low rolling Resistance**.

- **FUEL EFFICIENCY AND DURABILITY**

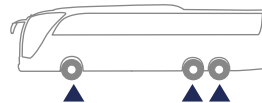
Specialized under-tread compound provide low rolling resistance and low heat generation, ensuring excellent retreadability and compliance with EPA **SmartWay**® verified fuel efficiency requirements.

- **OUTSTANDING IN ALL WEATHER CONDITIONS**

Tread pattern design combined with a full depth siping structure deliver **excellent grip** and traction in braking and acceleration throughout the life of the tire.

- **TOP HANDLING IN A QUIET RIDE**

SATT structure combined with the unique tread pattern design deliver a unique riding experience for many miles in exceptional **acoustic comfort**.



TIRE SIZE	PRODUCT NUMBER	INTERNATIONAL LOAD INDEX SPEED CODE	LOAD RANGE PLY RATING	LOADED RADIUS in. (mm)	OVERALL DIAMETER in. (mm)	OVERALL WIDTH in. (mm)	APPROVED RIMS in. (mm)	MINIMUM DUAL SPACING in. (mm)	REVS PER MILE rpm (rpk)	TREAD DEPTH 32nds (mm)	MAX SPEED mph (kph)*	MAX TIRE LOAD		SMARTWAY
												SINGLE lbs. psi (kg kPa)	DUAL lbs. psi (kg kPa)	
315/80R22.5	3764400	158/156 L	L/20	19.7 (500)	42.4 (1076)	12.4 (316)	<u>9.00</u> , 9.75	13.8 (351)	490 (304)	18/32 (14.3)	75 (120)	9370/130 (4250/900)	8820/130 (4000/900)	✓

Note: Rim underlined is measuring rim

«No bus shall be operated with regrooved, recapped or retreaded tires on the front wheels». US Code of Federal Reulations: Title 49, Transportation; Part 393.75.

(*) Exceeding the lawful speed limit is neither recommended nor endorsed.

REFUSE / SANITATION



MG89

MG89

ROBUST HIGH LOAD CARRYING CAPACITY ALL-POSITION TIRE DESIGNED FOR HIGH SCRUB REFUSE / SANITATION OPERATIONS

SATT™
Spiral Advanced Technology for Tires



- **RESISTANCE TO LATERAL IMPACTS**

Robust sidewall thickness ensure protection from curb / hazard impacts.

- **RESISTANCE TO LACERATION AND ABRASION**

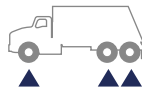
Tread pattern design and high scrub tread compound together with groove profile ensure optimum performance in the most demanding service conditions.

- **CASING DURABILITY AND INTEGRITY**

Heavy duty casing design (both in crown area as well as bead area) delivers superior resistance to landfill hazards and start/stop service pattern, ensuring exceptional retreadability.

- **HIGH MILEAGE IN DEMANDING SERVICE CONDITIONS**

High scrub tread compound deliver consistent performance in refuse / sanitation operations.



TIRE SIZE	PRODUCT NUMBER	INTERNATIONAL LOAD INDEX SPEED CODE	LOAD RANGE PLY RATING	LOADED RADIUS in. (mm)	OVERALL DIAMETER in. (mm)	OVERALL WIDTH in. (mm)	APPROVED RIMS in. (mm)	MINIMUM DUAL SPACING in. (mm)	REVS PER MILE rpm (rpk)	TREAD DEPTH 32nds (mm)	MAX SPEED mph (kph)*	MAX TIRE LOAD		M+S
												SINGLE lbs. psi (kg kPa)	DUAL lbs. psi (kg kPa)	
315/80R22.5	3840100	161/157 K	L/20	19.9 (505)	42.8 (1088)	12.4 (316)	<u>9.00</u> , 9.75	13.8 (351)	487 (303)	25/32 (19.8)	68 (110)	10200/130 (4625/900)	9095/130 (4125/900)	✓

Note: Rim underlined is measuring rim

(*) Exceeding the lawful speed limit is neither recommended nor endorsed.



MIXED SERVICE



FG:01 II



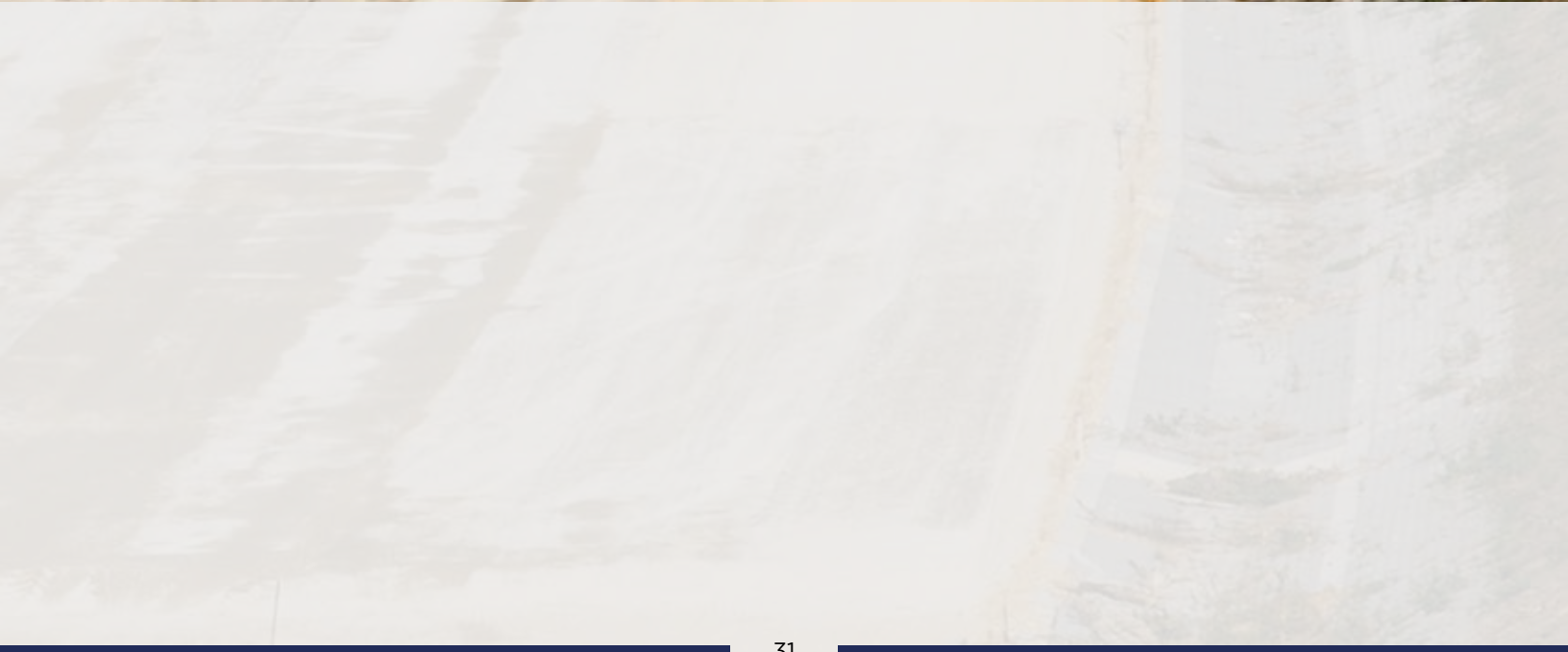
AP05



FG85



TG85





FG:01 II™

ROBUST ALL POSITION TIRE, DESIGNED FOR SEVERE MIXED SERVICE APPLICATION



- RESISTANCE TO LATERAL IMPACTS**
 Robust sidewall thickness ensure protection from lateral impact.
- RESISTANCE TO LACERATION AND ABRASION**
 Tread pattern design and compound together with groove profile featuring stone ejectors ensure optimum performance on every road condition.
- CASING DURABILITY AND INTEGRITY**
 High load carrying capacity casing design (both in crown area as well as bead area) delivers superior resistance to hazards and exceptional retreadability in severe service conditions.
- GREAT PERFORMANCE IN SEVERE SERVICE CONDITIONS**
 Chip and cut resistant tread compound together with sidewall compound designed to protect the tire from the most demanding conditions deliver consistent performance on and off highway service.



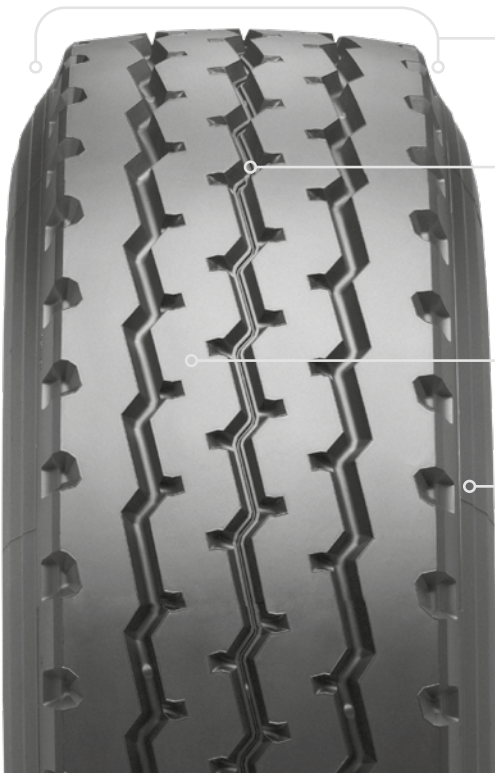
TIRE SIZE	PRODUCT NUMBER	INTERNATIONAL LOAD INDEX SPEED CODE	LOAD RANGE PLY RATING	LOADED RADIUS in. (mm)	OVERALL DIAMETER in. (mm)	OVERALL WIDTH in. (mm)	APPROVED RIMS in. (mm)	MINIMUM DUAL SPACING in. (mm)	REVS PER MILE rpm (rpk)	TREAD DEPTH 32nds (mm)	MAX SPEED mph (kph)*	MAX TIRE LOAD		M+S
												SINGLE lbs. psi (kg kPa)	DUAL lbs. psi (kg kPa)	
315/80R22.5	3886200	161/157 K	L/20	19.8 (504)	42.7 (1085)	12.4 (316)	<u>9.00</u> , 9.75	13.8 (351)	486 (304)	23/32 (18.3)	68 (110)	10200/130 (4625/900)	9095/130 (4125/900)	✓

Note: Rim underlined is measuring rim
 (*) Exceeding the lawful speed limit is neither recommended nor endorsed.

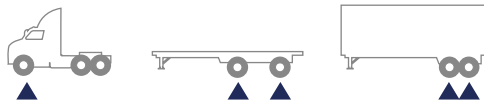
AP05™

ROBUST WIDE BASE ALL POSITION RADIAL TIRE

SATT™
Special Advanced Technology for Trucks



- WIDE BASE FOOTPRINT**
 Wider tread improve floatation to ensure **maximum traction in every service condition.**
- DURABILITY AND INTEGRITY**
 Sturdy tire casing design enhanced by structure featuring 4 belts and zero degree structure, delivering **exceptional resistance** to penetrations and hazards ensuring **casing durability** and **retreadability.**
- HIGH MILEAGE**
 Strong tire construction together with exceptional tread depth and improved Cap & Base thickness make AP05 deliver **long tread life.**
- UPPER SIDEWALL AND SHOULDER RESISTANCE**
Additional compound supports and protects the casing from operation hazard, curbing and impacts..



TIRE SIZE	PRODUCT NUMBER	INTERNATIONAL LOAD INDEX SPEED CODE	LOAD RANGE PLY RATING	LOADED RADIUS in. (mm)	OVERALL DIAMETER in. (mm)	OVERALL WIDTH in. (mm)	APPROVED RIMS in. (mm)	REVS PER MILE rpm (rpk)	TREAD DEPTH 32nds (mm)	MAX SPEED mph (kph)*	MAX TIRE LOAD	
											SINGLE lbs. psi (kg kPa)	M+S
385/65R22.5	2416600	160K	L/20	19.6 (498)	42.4 (1077)	14.8 (377)	<u>11.75</u> , 12.25	473 (296)	20/32 (15.9)	68 (110)	9925/130 (4500/900)	✓

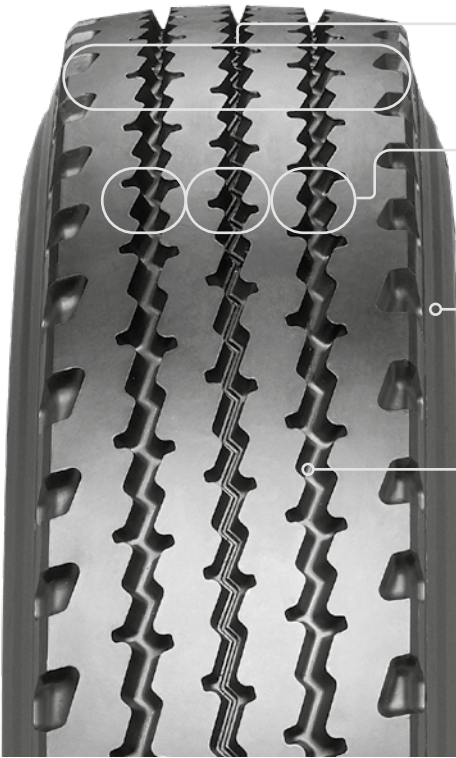
Note: Rim underlined is measuring rim

(*) Exceeding the lawful speed limit is neither recommended nor endorsed.



FG85™

ON-OFF ROAD STEER ALL POSITION



- ROBUST CIRCUMFERENTIAL RIBS, ROUNDED CONTOUR AND TREAD GROOVE PROFILE**
 Resistance to laceration and stone trapping
- ZIG-ZAG LONGITUDINAL GROOVES AND WIDE TRANSVERSAL SHOULDER GROOVES**
 Enhanced traction and grip on any surface
 Roadholding
- TREAD COMPOUND SPECIALLY FORMULATED TO PROVIDE LOWER OPERATING TEMPERATURE**
 Tire integrity
 Retreadability
- OPTIMUM TREAD DEPTH AND INCREASED UNDERTREAD**
 Longer tire life
 Reduced possibility of casing damage
 Mileage



TIRE SIZE	PRODUCT NUMBER	INTERNATIONAL LOAD INDEX SPEED CODE	LOAD RANGE PLY RATING	LOADED RADIUS in. (mm)	OVERALL DIAMETER in. (mm)	OVERALL WIDTH in. (mm)	APPROVED RIMS in. (mm)	MINIMUM DUAL SPACING in. (mm)	REVS PER MILE rpm (rpk)	TREAD DEPTH 32nds (mm)	MAX SPEED mph (kph)*	MAX TIRE LOAD		M+S
												SINGLE lbs. psi (kg kPa)	DUAL lbs. psi (kg kPa)	
11R22.5	2849500	148/145 K	H/16	19.6	41.7	10.6	<u>8.25</u> , 7.50	12.4	482	23/32	68	6950/120	6400/120	✓
				(497)	(1059)	(270)	(314)	(381)	(18.3)	(110)	(3150/830)	(2900/830)		
11R24.5 (**)	2801600	149/146 K	H/16	20.6	43.6	10.9	<u>8.25</u> , 7.50	12.4	463	25/32	68	7160/120	6610/120	✓
				(523)	(1107)	(277)	(314)	(288)	(19.8)	(110)	(3250/830)	(3000/830)		

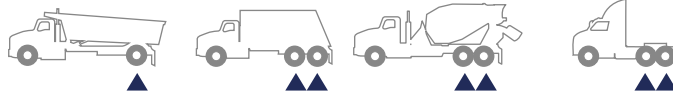
Note: Rim underlined is measuring rim
 (*) Exceeding the lawful speed limit is neither recommended nor endorsed.
 (**) FG85 Plus

TG85™

ON-OFF ROAD DRIVE



- ROBUST SHOULDER BLOCKS AND MASSIVE CENTRAL RIB**
 Resistance against tears and laceration
- INCREASED UNDERTREAD**
 Reduced possibility of accidental casing damage. Longer tire life.
- SPECIAL TREAD COMPOUND FORMULATED TO PROVIDE LOWER OPERATING TEMPERATURES**
 Tire integrity and retreadability Increased mileage in both on and off road solutions
- SIDEWALL PROTECTION RIBS**
- WIDE AND DEEP TRANSVERSAL GROOVES**
 Road holding and traction on slippery surfaces.



TIRE SIZE	PRODUCT NUMBER	INTERNATIONAL LOAD INDEX SPEED CODE	LOAD RANGE PLY RATING	LOADED RADIUS in. (mm)	OVERALL DIAMETER in. (mm)	OVERALL WIDTH in. (mm)	APPROVED RIMS in. (mm)	MINIMUM DUAL SPACING in. (mm)	REVS PER MILE rpm (rpk)	TREAD DEPTH 32nds (mm)	MAX SPEED mph (kph)*	MAX TIRE LOAD		M+S
												SINGLE lbs. psi (kg kPa)	DUAL lbs. psi (kg kPa)	
11R22.5	2849600	148/145 K	H/16	19.8	42.4	10.6	<u>8.25</u> , 7.50	12.4	473	28/32	68	6950/120	6400/120	✓
				(503)	(1077)	(270)	(314)	(296)	(22.2)	(110)	(3150/830)	(2900/830)		
11R24.5 (**)	2801700	149/146 K	H/16	20.6	43.9	10.8	<u>8.25</u> , 7.50	12.4	459	30/32	68	7160/120	6610/120	✓
				(523)	(1116)	(275)	(314)	(285)	(23.8)	(110)	(3250/830)	(3000/830)		

Note: Rim underlined is measuring rim
 (*) Exceeding the lawful speed limit is neither recommended nor endorsed.
 (**) TG85 Plus

TIRE MARKINGS

Nominal aspect ratio or series (H/S*100)

315/80

R

22.5

158/156

M

L/20

Nominal section width (or width code)

Construction code

Nominal rim diameter (Code)

International Load indices (single / dual)

Speed symbol

Load Range / Ply Rating

11.00

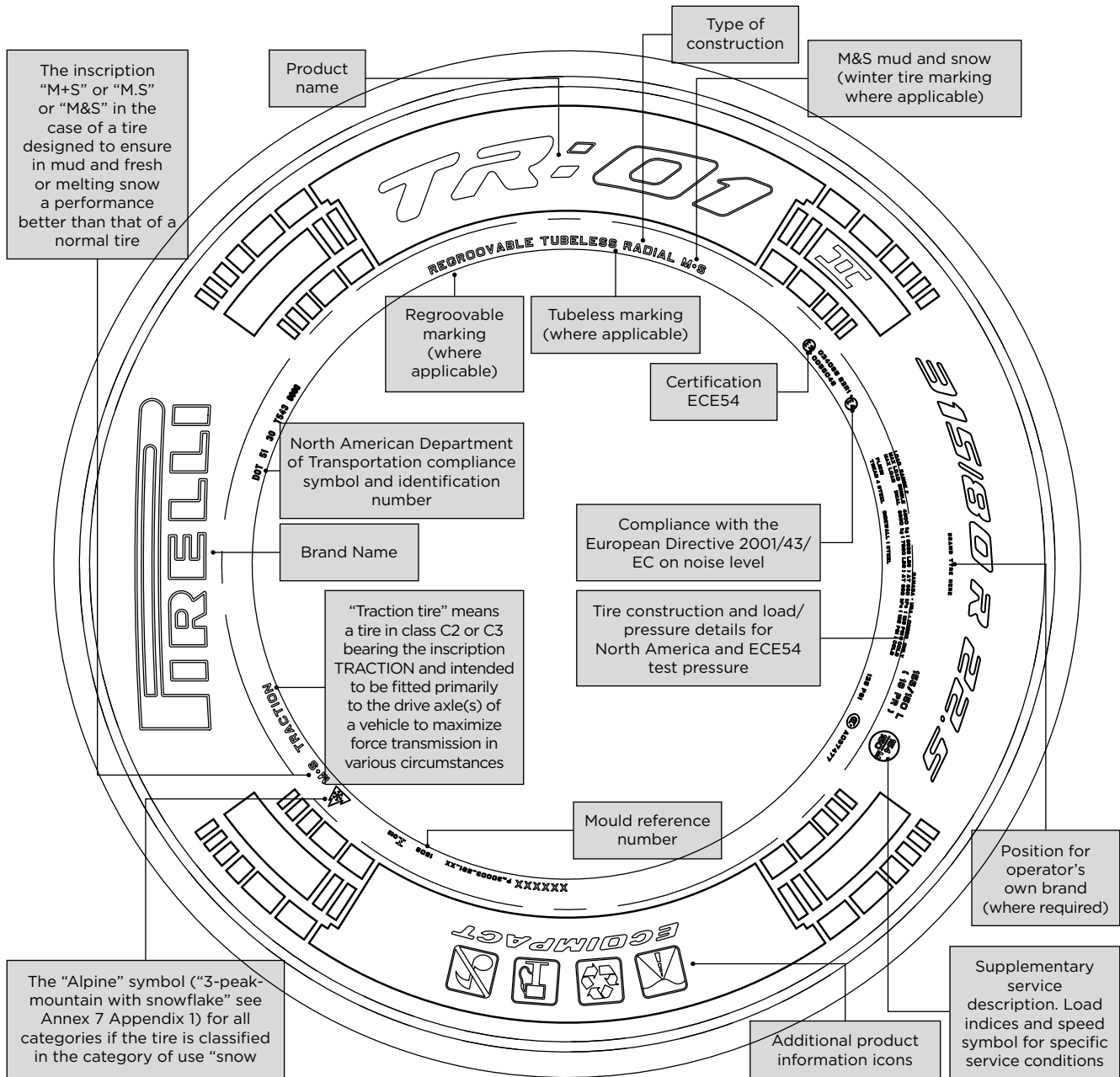
R

20

149/146

J

H/16



The inscription "M+S" or "M.S" or "M&S" in the case of a tire designed to ensure in mud and fresh or melting snow a performance better than that of a normal tire

The "Alpine" symbol ("3-peak-mountain with snowflake" see Annex 7 Appendix 1) for all categories if the tire is classified in the category of use "snow"

TECHNICAL TABLES LEGEND

(S) SECTION WIDTH (MM)

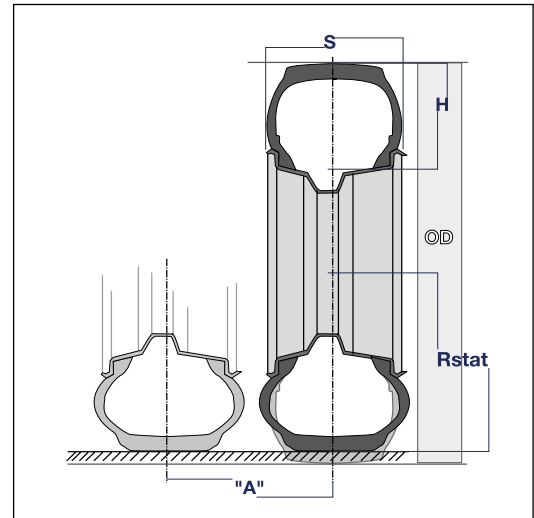
The linear distance between the outsides of the sidewalls of an inflated tire excluding elevations due to labelling (marking), design application indicators, protective bands or ribs.

(H) SECTION HEIGHT (MM)

Half difference between the overall diameter and the nominal rim diameter.

(OD) OVERALL DIAMETER (MM)

The diameter of an inflated tire at the outermost surface of the tread.



(RSTAT) STATIC LADEN RADIUS (MM)

The distance between wheel centre and road surface referring to a tire inflated and loaded at the values shown in the table under static conditions.

ROLLING CIRCUMFERENCE (MM)

The distance covered in one complete revolution of the tire under load and pressure conditions indicated in the tables.

(A) MINIMUM DUAL SPACING FOR TWIN FITMENTS (MM)

Dual spacing is the distance between the centre lines of the twin tires. The “A min” values refer to tires without chains and may also be applied in the case of the fitment of chains for twin tires. If chains are fitted on one tire only, the “A min” values must be increased so that the sidewalls of the tire under load do not trap the chain and become damaged.

CONVERSION FACTORS

TO CONVERT FROM	INTO	MULTIPLY BY
mm	inch	0.03937
inch	mm	25.4
kg	lbs.	2.2046
lbs.	kg	0.4536
bar	kg/cm ²	1.01972
kg/cm ²	bar	0.98066
bar	lbs./sq. inch (psi)	14.5033
lbs./sq. inch (psi)	bar	0.06895
bar	kPa	100
lbs./sq. inch (psi)	kPa	6.895
km/h	m.p.h.	0.62137
m.p.h.	km/h	1.60935

INTERNATIONAL LOAD AND SPEED TABLES

CONVERSION OF LOAD INDICES (LI) INTO LOAD CAPACITIES PER TIRE [KG AND LBS]

LI	KG	LBS
80	450	990
81	462	1020
82	475	1045
83	487	1075
84	500	1100
85	515	1135
86	530	1170
87	545	1200
88	560	1235
89	580	1280
90	600	1325
91	615	1355
92	630	1390
93	650	1435
94	670	1475
95	690	1520
96	710	1565
97	730	1610
98	750	1655
99	775	1710
100	800	1765
101	825	1820
102	850	1875
103	875	1930
104	900	1985
105	925	2040
106	950	2095
107	975	2150
108	1000	2205
109	1030	2270
110	1060	2335
111	1090	2405
112	1120	2470
113	1150	2535
114	1180	2600
115	1215	2680
116	1250	2755
117	1285	2835
118	1320	2910
119	1360	3000
120	1400	3085
121	1450	3195
122	1500	3305
123	1550	3415
124	1600	3525
125	1650	3640

LI	KG	LBS
126	1700	3750
127	1750	3860
128	1800	3970
129	1850	4080
130	1900	4190
131	1950	4300
132	2000	4410
133	2060	4540
134	2120	4675
135	2180	4805
136	2240	4940
137	2300	5070
138	2360	5205
139	2430	5355
140	2500	5510
141	2575	5675
142	2650	5840
143	2725	6010
144	2800	6175
145	2900	6395
146	3000	6615
147	3075	6780
148	3150	6945
149	3250	7165
150	3350	7385
151	3450	7605
152	3550	7825
153	3650	8045
154	3750	8265
155	3875	8545
156	4000	8820
157	4125	9095
158	4250	9370
159	4375	9645
160	4500	9920
161	4625	10195
162	4750	10470
163	4875	10745
164	5000	11020
165	5150	11355
166	5300	11685
167	5450	12015
168	5600	12345
169	5800	12785
170	6000	13230

SPEED SYMBOLS [KM/H & MPH]

SYMBOL	E	F	G	J	K	L	M	N	P	Q	R	S	T
KM/H	70	80	90	100	110	120	130	140	150	160	170	180	190
M.P.H.	43	50	56	62	68	75	81	87	93	99	106	112	118

COMMERCIAL VEHICLE TIRES MEDIUM TRUCK & BUS TIRES LOAD INFLATION TABLES



SAFETY WARNING

SERIOUS INJURY MAY RESULT FROM:

- **Tire failure due to underinflation / overloading or misapplication.
Follow tire placard instructions in vehicle.
Check inflation pressure frequently with an accurate gauge.**
- **Explosion of tire / rim assembly due to improper mounting.
Only specially trained people should mount tires.
Always inflate tire / rim assembly in a tire inflation safety cage and
use a remote controlled clip-on air hose and an in-line air valve with
gauge.**

COMMERCIAL VEHICLE TIRES

Metric and wide-base sizes on 15 degree drop-center rims - radial ply.

Tire load limits at various cold inflation pressures.

NOTE:

Never Exceed the Wheel Manufacturer's Maximum Pressure Limitation
Exceeding the Legal Speed Limit is Neither Recommended nor Endorsed

S = Single Configuration, or 2 Tires per Axle

D = Dual Configuration, or 4 Tires per Axle

Letter in parenthesis indicate load range at the designated max load/max pressure combination

* The first number reflects the official conversion and the second number reflects the previous value.

Some products may still be marked with the previous value.

WHEEL DIAMETER 17.5"

	PSI			85	90	95	100	105	110	115	120	125	130
	kPa			585	620	*655/660	690	725	760	790	*825/830	860	900
215/75R17.5 LR H 135/133 R89 Trailer	LBS S				3695	3860	4010	4180	4330	4495	4650	4805 (H)	
	LBS D				3500	3648	3798	3945	4095	4245	4393	4540 (H)	
	KG S				1676	1751	1819	1896	1964	2039	2109	2180 (H)	
	KG D				1588	1655	1723	1790	1858	1926	1993	2060 (H)	
235/75R17.5 LR J 245/70R17.5 LR J 143/141 R89 Trailer	LBS S			4200	4410	4615	4820	5025	5225	5420	5620	5810	6005 (J)
	LBS D			3970	4170	4365	4555	4745	4935	5125	5310	5495	5675 (J)
	KG S			1910	2020	2100	2200	2280	2360	2470	2550	2650	2725 (J)
	KG D			1800	1900	1980	2080	2160	2230	2330	2410	2500	2575 (J)

WHEEL DIAMETER 19.5"

	PSI	70	75	80	85	90	95	100	105	110	115	120	125	130
	kPa	480	520	550	585	620	*655/660	690	725	760	790	*825/830	860	900
225/70R19.5 LR G 128/126 R89, R89 Drive	LBS S			3195	3315	3450	3640	3715	3845	3970 (G)				
	LBS D			3000	3115	3245	3415	3490	3615	3750 (G)				
	KG S			1450	1500	1570	1650	1690	1740	1800 (G)				
	KG D			1360	1410	1470	1550	1580	1640	1700 (G)				
245/70R19.5 LR H 136/134 R89, R89 Drive	LBS S				3750	3925	4100	4270	4440	4610	4775	4940 (H)		
	LBS D				3550	3715	3880	4040	4200	4360	4520	4675 (H)		
	KG S				1700	1770	1860	1930	2000	2090	2150	2240 (H)		
	KG D				1610	1680	1760	1830	1890	1980	2040	2120 (H)		
265/70R19.5 LR H 140/138 R89, R89 Drive	LBS S			4185	4430	4605	4850	5025	5190	5420	5510 (H)			
	LBS D			3950	4180	4350	4570	4740	4905	5120	5205 (H)			
	KG S			1900	2010	2090	2200	2280	2355	2460	2500 (H)			
	KG D			1793	1898	1975	2075	2150	2225	2323	2360 (H)			

WHEEL DIAMETER 22.5"

	PSI	70	75	80	85	90	95	100	105	110	115	120	125	130
	kPa	480	520	550	590	620	*655/660	690	720	760	790	*825/830	860	900
11R22.5 LR G 144/141 H89 Drive Plus, H94 Drive, R89, H89 Trailer	LBS S	4530	4770	4990	5220	5510	5730	5950	6175 (G)					
	LBS D	4380	4580	4760	4950	5205	5415	5625	5840 (G)					
	KG S	2050	2160	2260	2370	2500	2600	2700	2800 (G)					
	KG D	1990	2080	2160	2250	2360	2460	2560	2650 (G)					
11R22.5 LR H 146/143 H89 Plus, R89 R89 Drive, R89 CS Drive	LBS S		4770	4990	5220	5510	5730	5950	6175	6320	6465	6610 (H)		
	LBS D		4580	4760	4950	5205	5415	5625	5840	5895	5950	6005 (H)		
	KG S		2160	2260	2370	2500	2600	2700	2800	2870	2940	3000 (H)		
	KG D		2080	2160	2250	2360	2460	2560	2650	2680	2710	2725 (H)		
11R22.5 LR H 148/145 FG85 TG85	LBS S		4775	4995	5280	5500	5775	5985	6195	6470	6680	6950 (H)		
	LBS D		4398	4603	4868	5065	5325	5518	5705	5958	6148	6400 (H)		
	KG S		2165	2265	2395	2495	2620	2715	2810	2935	3030	3150 (H)		
	KG D		1995	2088	2208	2298	2415	2503	2588	2703	2788	2900 (H)		
295/75R22.5 LR G 144/141 H89 Plus, H89 Drive Plus, H94 Drive, H89 Trailer	LBS S	4500	4725	4940	5155	5370	5510	5780	5980	6175 (G)				
	LBS D	4095	4300	4540	4690	4885	5070	5260	5440	5675 (G)				
	KG S	2040	2140	2240	2340	2440	2500	2620	2710	2800 (G)				
	KG D	1860	1950	2060	2130	2220	2300	2390	2470	2575 (G)				
295/75R22.5 LR H 149/146 H89 Plus, R89, R89 Drive, R89 CS Drive	PSI	70	75	80	85	90	95	100	105	110	115	120	123	125
	kPa	480	520	550	590	620	*655/660	690	720	760	790	*825/830	850	860
	LBS S			5060	5350	5570	5850	6060	6270	6550	6760	7030	7160 (H)	
	LBS D			4670	4940	5140	5400	5600	5790	6050	6240	6490	6610 (H)	
255/70R22.5 LR H 140/137 FH15	PSI	70	75	80	85	90	95	100	105	110	115	120	125	130
	kPa	480	520	550	590	620	*655/660	690	720	760	790	*825/830	850	900
	LBS S			4190	4370	4550	4675	4895	5065	5205	5400	5510 (H)		
	LBS D			3970	4110	4275	4410	4455	4610	4675	4915	5070 (H)		
** 275/70R22.5 LR J 148/145 R89	KG S			1900	1980	2060	2120	2220	2300	2360	2450	2500 (H)		
	KG D			1800	1860	1940	2000	2020	2090	2120	2230	2300 (H)		
	LBS S						5420	5610	5810	6060	6260	6500	6640	6940 (J)
	LBS D						4990	5170	5350	5580	5760	5990	6110	6395 (J)
315/80R22.5 LR L 158/156 H94 Coach, R89, R89 Drive	KG S						2460	2545	2635	2750	2840	2950	3010	3150 (J)
	KG D						2263	2345	2425	2533	2613	2718	2770	2900 (J)
	LBS S						7310	7570	7840	8180	8440	8790	8950	9370 (L)
	LBS D						6880	7130	7370	7710	7950	8270	8420	8820 (L)
315/80R22.5 LR L 161/157 MG89, FG01	KG S						3315	3435	3555	3710	3830	3985	4060	4250 (L)
	KG D						3120	3235	3345	3495	3605	3750	3820	4000 (L)
	LBS S						7960	8250	8530	8910	9180	9560	9740	10200 (L)
	LBS D						7090	7350	7610	7940	8200	8520	8690	9095 (L)
385/65R22.5 LR L 160K SINGLE ONLY APO5	KG S						3610	3740	3870	4040	4165	4335	4420	4625 (L)
	KG D						3218	3335	3450	3603	3718	3868	3940	4125 (L)
	LBS S						7740	8030	8300	8660	8940	9300	9480	9925 (L)
	KG S						3510	3640	3765	3930	4055	4220	4300	4500 (L)

** 275/70R22.5 LR J can only be used on either 7.50" or 8.25" wheel. It cannot be used on 9" wheel.

WHEEL DIAMETER 24.5"

	PSI	70	75	80	85	90	95	100	105	110	115	120	125	130
	kPa	480	520	550	590	620	*655/660	690	720	760	790	*825/830	850	900
11R24.5 LR H 149/146 H89, H89 Drive, H89 Trailer, FG85 Plus, TG85 Plus	LBS S				5550	5840	6095	6350	6610	6790	6970	7160 (H)		
	LBS D				5260	5510	5675	5840	6005	6205	6405	6610 (H)		
	KG S				2520	2650	2770	2890	3000	3080	3160	3250 (H)		
	KG D				2390	2500	2580	2660	2725	2820	2910	3000 (H)		
285/75R24.5 LR H 147/144 R89, R89 CS Drive	LBS S				5210	5450	5675	5835	6040	6175	6440	6780 (H)		
	LBS D				4740	4930	5205	5310	5495	5675	5860	6175 (H)		
	KG S				2360	2460	2575	2650	2740	2800	2920	3075 (H)		
	KG D				2150	2240	2360	2410	2490	2575	2660	2800 (H)		

LOAD TABLES FOR TRUCKS, BUSES AND TRAILERS USED IN NORMAL HIGHWAY SERVICE

Loads are indicated per axle.

NOTE:

Never Exceed the Wheel Manufacturer's Maximum Pressure Limitation
Always Use Approved Tire and Rim Combinations for Diameters and Contours
Exceeding the Legal Speed Limit is Neither Recommended nor Endorsed

S = Single Configuration, or 2 Tires per Axle

D = Dual Configuration, or 4 Tires per Axle

* The first number reflects the official conversion and the second number reflects the previous value.
Some products may still be marked with the previous value.

WHEEL DIAMETER 17.5"

	PSI													MAXIMUM LOAD AND PRESSURE ON SIDEWALL
	kPa	85	90	95	100	105	110	115	120	125	130			
		585	620	*655/660	690	725	760	790	*825/830	860	900			
215/75R17.5 LR H 135/133 R89 Trailer	LBS S		7390	7720	8020	8360	8660	8990	9300	9610		S	4805 LBS AT 125 PSI	
	LBS D		14000	14590	15190	15780	16380	16980	17570	18160		D	4540 LBS AT 125 PSI	
	KG S		3352	3502	3638	3792	3928	4078	4218	4360		S	2180 KG AT 860 kPa	
	KG D		6350	6618	6890	7158	7430	7702	7970	8240		D	2060 KG AT 860 kPa	
235/75R17.5 LR J 245/70R17.5 LR J 143/141 R89 Trailer	LBS S		8400	8820	9230	9640	10050	10450	10840	11240	11620	12010	S	6005 LBS AT 130 PSI
	LBS D		15880	16680	17460	18220	18980	19740	20500	21240	21980	22700	D	5675 LBS AT 130 PSI
	KG S		3820	4040	4200	4400	4560	4720	4940	5100	5300	5450	S	2725 KG AT 900 kPa
	KG D		7200	7600	7920	8320	8640	8920	9320	9640	10000	10300	D	2575 KG AT 900 kPa

WHEEL DIAMETER 19.5"

	PSI	70	75	80	85	90	95	100	105	110	115	120	125	130	MAXIMUM LOAD AND PRESSURE ON SIDEWALL	
	kPa	480	520	550	585	620	*655/660	690	725	760	790	*825/830	860	900		
225/70R19.5 LR G 128/126 R89, R89 Drive	LBS S			6390	6630	6900	7280	7430	7690	7940					S	3970 LBS AT 110 PSI
	LBS D			12000	12460	12980	13660	13960	14460	15000					D	3750 LBS AT 110 PSI
	KG S			2900	3000	3140	3300	3380	3480	3600					S	1800 KG AT 760 kPa
	KG D			5440	5640	5880	6200	6320	6560	6800					D	1700 KG AT 760 kPa
245/70R19.5 LR H 136/134 R89, R89 Drive	LBS S				7500	7850	8200	8540	8880	9220	9550	9880			S	4940 LBS AT 120 PSI
	LBS D				14200	14860	15520	16160	16800	17440	18080	18700			D	4675 LBS AT 120 PSI
	KG S				3400	3540	3720	3860	4000	4180	4300	4480			S	2240 KG AT 825 kPa
	KG D				6440	6720	7040	7320	7560	7920	8160	8480			D	2120 KG AT 825 kPa
265/70R19.5 LR H 140/138 R89, R89 Drive	LBS S			8370	8860	9210	9700	10050	10380	10840	11020				S	5510 LBS AT 115 PSI
	LBS D			15800	16730	17410	18290	18950	19620	20480	20820				D	5205 LBS AT 115 PSI
	KG S			3800	4020	4180	4400	4560	4710	4920	5000				S	2500 KG AT 790 kPa
	KG D			7170	7590	7900	8300	8600	8900	9290	9440				D	2360 KG AT 790 kPa

WHEEL DIAMETER 22.5"

	PSI	70	75	80	85	90	95	100	105	110	115	120	125	130	MAXIMUM LOAD AND PRESSURE ON SIDEWALL
	kPa	480	520	550	590	620	*655/660	690	720	760	790	*825/830	860	900	
11R22.5 LRG 144/141 H89 Drive Plus, H94 Drive, R89, H89 Trailer	LBS S	9060	9540	9980	10440	11020	11460	11900	12350						S 6175 LBS AT 105 PSI
	LBS D	17520	18320	19040	19800	20820	21660	22500	23360						D 5840 LBS AT 105 PSI
	KG S	4100	4320	4520	4740	5000	5200	5400	5600						S 2800 KG AT 720 kPa
	KG D	7960	8320	8640	9000	9440	9840	10240	10600						D 2650 KG AT 720 kPa
11R22.5 LRH 146/143 H89 Plus, R89, R89 Drive, R89 CS Drive	LBS S		9540	9980	10440	11020	11460	11900	12350	12640	12930	13220			S 6610 LBS AT 120 PSI
	LBS D		18320	19040	19800	20820	21660	22500	23360	23580	23800	24020			D 6005 LBS AT 120 PSI
	KG S		4320	4520	4740	5000	5200	5400	5600	5740	5880	6000			S 3000 KG AT 830 kPa
	KG D		8320	8640	9000	9440	9840	10240	10600	10720	10840	10900			D 2725 KG AT 830 kPa
11R22.5 LR H 148/145 FG85 TG85	LBS S		9550	9990	10560	11000	11550	11970	12390	12940	13360	13900			S 6950 LBS AT 120 PSI
	LBS D		17590	18410	19470	20260	21300	22070	22820	23830	24590	25600			D 6400 LBS AT 120 PSI
	KG S		4330	4530	4790	4990	5240	5430	5620	5870	6060	6300			S 3150 KG AT 830 kPa
	KG D		7980	8350	8830	9190	9660	10010	10350	10810	11150	11600			D 2900 KG AT 830 kPa
295/75R22.5 LR G 144/141 H89 Plus, H89 Drive Plus, H94 Drive, H89 Trailer	LBS S	9000	9450	9880	10310	10740	11020	11560	11960	12350					S 6175 LBS AT 110 PSI
	LBS D	16380	17200	18160	18760	19540	20280	21040	21760	22700					D 5675 LBS AT 110 PSI
	KG S	4080	4280	4480	4680	4880	5000	5240	5420	5600					S 2800 KG AT 760 kPa
	KG D	7440	7800	8240	8520	8880	9200	9560	9880	10300					D 2575 KG AT 760 kPa
	PSI	70	75	80	85	90	95	100	105	110	115	120	123	125	MAXIMUM LOAD AND PRESSURE ON SIDEWALL
	kPa	480	520	550	590	620	*655/660	690	720	760	790	*825/830	850	860	
295/75R22.5 LR H 149/146 H89 Plus, R89, R89 Drive, R89 CS Drive	LBS S			10120	10700	11140	11700	12120	12540	13100	13520	14060	14320		S 7160 LBS AT 123 PSI
	LBS D			18680	19760	20560	21600	22400	23160	24200	24960	25960	26440		D 6610 LBS AT 123 PSI
	KG S			4590	4850	5050	5310	5500	5690	5940	6130	6380	6500		S 3250 KG AT 850 kPa
	KG D			8472	8960	9320	9800	10160	10512	10972	11320	11772	12000		D 3000 KG AT 850 kPa
	PSI	70	75	80	85	90	95	100	105	110	115	120	125	130	MAXIMUM LOAD AND PRESSURE ON SIDEWALL
	kPa	480	520	550	590	620	*655/660	690	720	760	790	*825/830	850	900	
255/70R22.5 LR H 140/137 FH15	LBS S			8380	8740	9100	9350	9790	10130	10410	10800	11020			S 5510 LBS AT 120 PSI
	LBS D			15880	16440	17100	17640	17820	18440	18700	19660	20280			D 5070 LBS AT 120 PSI
	KG S			3800	3960	4120	4240	4440	4600	4720	4900	5000			S 2500 KG AT 830 kPa
	KG D			7200	7440	7760	8000	8080	8360	8480	8920	9200			D 2300 KG AT 830 kPa
** 275/70R22.5 LR J 148/145 R89	LBS S						10840	11220	11620	12120	12520	13000	13280	13880	S 6940 LBS AT 130 PSI
	LBS D						19960	20680	21400	22320	23040	23960	24440	25580	D 6395 LBS AT 130 PSI
	KG S						4920	5090	5270	5500	5680	5900	6020	6300	S 3150 KG AT 900 kPa
	KG D						9050	9380	9700	10130	10450	10870	11080	11600	D 2900 KG AT 900 kPa
315/80R22.5 LR L 158/156 H94 Coach, R89, R89 Drive	LBS S						14620	15140	15680	16360	16880	17580	17900	18740	S 9370 LBS AT 130 PSI
	LBS D						27520	28520	29480	30840	31800	33080	33680	35280	D 8820 LBS AT 130 PSI
	KG S						6630	6870	7110	7420	7660	7970	8120	8500	S 4250 KG AT 900 kPa
	KG D						12480	12940	13380	13980	14420	15000	15280	16000	D 4000 KG AT 900 kPa
315/80R22.5 LR L161/157 MG89, FG01	LBS S						15920	16500	17060	17820	18360	19120	19480	20400	S 10200 LBS AT 130 PSI
	LBS D						28360	29400	30440	31760	32800	34080	34760	36360	D 9095 LBS AT 130 PSI
	KG S						7220	7480	7740	8080	8330	8670	8840	9250	S 4625 KG AT 900 kPa
	KG D						12870	13340	13800	14410	14870	15470	15760	16500	D 4125 KG AT 900 kPa
385/65R22.5 LR L 160K SINGLE ONLY APO5	LBS S						15480	16060	16600	17320	17880	18600	18960	19850	S 9925 LBS AT 130 PSI
	KG S						7020	7280	7530	7860	8110	8440	8600	9000	S 4500 KG AT 900 kPa

** 275/70R22.5 LR J can only be used on either 7.50" or 8.25" wheel. It cannot be used on 9" wheel.

WHEEL DIAMETER 24.5"

	PSI	70	75	80	85	90	95	100	105	110	115	120	125	130	MAXIMUM LOAD AND PRESSURE ON SIDEWALL
	kPa	480	520	550	590	620	*655/660	690	720	760	790	*825/830	850	900	
11R24.5 LR H 149/146 H89, H89 Drive, H89 Trailer, FG85 Plus, TG85 Plus	LBS S				11100	11680	12190	12700	13220	13580	13940	14320			S 7160 LBS AT 120 PSI
	LBS D				21040	22040	22700	23360	24020	24820	25620	26440			D 6610 LBS AT 120 PSI
	KG S				5040	5300	5540	5780	6000	6160	6320	6500			S 3250 KG AT 830 kPa
	KG D				9560	10000	10320	10640	10900	11280	11640	12000			D 3000 KG AT 830 kPa
285/75R24.5 LR H 147/144 R89, R89 CS Drive	LBS S				10420	10900	11350	11670	12080	12350	12880	13560			S 6780 LBS AT 120 PSI
	LBS D				18960	19720	20820	21240	21980	22700	23440	24700			D 6175 LBS AT 120 PSI
	KG S				4720	4920	5150	5300	5480	5600	5840	6150			S 3075 KG AT 825 kPa
	KG D				8600	8960	9440	9640	9960	10300	10640	11200			D 2800 KG AT 825 kPa

PROMETEON TYRE GROUP COMMERCIAL SOLUTIONS, LLC REPLACEMENT LIMITED WARRANTY PIRELLI BRAND TRUCK & BUS TIRES

What Is Warranted And Who Is Eligible Under The Limited Warranty

Prometeon Tyre Group Commercial Solutions LLC (PTGCS), 100 Pirelli Drive, PO Box 700, Rome, GA 30161-7000, warrants to the original purchaser that all Pirelli branded replacement tires with a complete Department of Transportation tire identification number and warranted by PTGCS either directly or through an authorized Dealer and which are mounted on trucks and buses within the U.S.A. and Canada will be free from anomalies in workmanship and materials. The PTGCS Replacement Limited Warranty is subject to periodic revision; see the Tire Warranty section at http://www.prometeon.com/tires/en-us/truck_bus/press-area/warranty for the latest version.

Definitions

Replacement Tires are defined as tires mounted to your vehicle after the Original Equipment tires have been removed.

What Is The Adjustment Policy And For How Long?

If an eligible Pirelli branded replacement tire becomes unserviceable due to workmanship or material anomalies during its initial warranty period, which is one (1) year from the date of original retail purchase of replacement tires (purchase receipt required) or within the first 2/32" of the original usable tread, whichever occurs first, the tire will be replaced with the same or comparable tire at no charge to the owner.

After the initial warranty period, if an eligible Pirelli branded replacement tire becomes unserviceable due to workmanship or material anomalies, the owner will be entitled to receive a Pro-Rated Adjustment Amount based on remaining tread depth as follows:

$$\text{Pro-Rated Adjustment Amount} = \text{Pro-Rated Percentage Based On Wear [From Table 1]} \\ \times (\text{Original Tire Price Paid by Owner})$$

If owner is unable to show evidence of the original tire price paid then the Original Tire Price shall be equal to the purchase price of the adjusting dealer at time of adjustment. You are responsible for all mounting, balancing, disposal fees, servicing costs and all applicable taxes, including FET, which will not be included in the pricing for adjustment calculations.

Ride related warranty claims must be submitted within the first 2/32" of wear or within one (1) year from the date of original purchase of replacement tires (purchase receipt required), whichever comes first, to be considered. If accepted, the tire will be replaced at no charge or a credit will be given for 100% of the current dealer selling price.

A tire has delivered its original usable tread life when it has been worn down to the top of the built-in indicators in the tread grooves. The following guidelines for removal are to be considered regardless of age or mileage:

- 4/32nds for tires used in the steering position;
- 2/32nds for tires used in all other applications.

TABLE 1

TRUCK AND BUS TIRE - PRO-RATED WARRANTY PERCENTAGES BASED ON WEAR

		ORIGINAL TIRE TREAD DEPTH →																						
TREAD DEPTH REMAINING ↓	32nds	12	13	14	15	16	17	18	19	20	21	22	23	24	25	26	27	28	29	30	31	32nds	TREAD DEPTH REMAINING ↓	
	2/32	0	0	0	0	0	0	0	0	0	0	0	0	0	0	0	0	0	0	0	0	0		2/32
	3/32	10	10	10	10	10	10	10	6	5	15	15	13	13	12	12	12	11	11	10	10	3/32		
	4/32	20	20	15	15	15	15	15	12	20	20	20	17	17	16	16	15	15	14	14	13	4/32		
	5/32	30	25	25	25	20	20	20	18	25	25	25	22	21	20	20	19	18	18	17	17	5/32		
	6/32	40	35	35	30	30	25	25	24	30	30	28	26	25	24	23	23	22	21	20	20	6/32		
	7/32	50	45	40	40	35	35	30	30	35	35	32	31	30	28	27	26	25	25	24	23	7/32		
	8/32	60	55	50	45	40	40	35	36	40	40	37	35	34	32	31	30	29	28	27	26	8/32		
	9/32	70	65	60	55	50	45	45	42	45	45	40	39	38	36	35	34	33	32	30	29	9/32		
	10/32	80	75	65	60	55	55	50	47	50	50	45	44	42	40	39	38	36	35	34	33	10/32		
	11/32	90	80	75	70	65	60	55	53	55	53	50	48	46	44	43	41	40	38	37	36	11/32		
	12/32	100	90	85	75	70	65	60	59	60	58	55	52	50	48	47	45	43	42	40	39	12/32		
	13/32		100	90	85	80	75	70	65	65	62	60	57	55	52	50	49	47	45	44	42	13/32		
	14/32			100	90	85	80	75	71	70	67	65	61	59	56	54	52	50	49	47	46	14/32		
	15/32				100	90	85	80	77	75	72	70	65	63	60	58	56	54	52	50	49	15/32		
	16/32					100	95	90	83	80	77	73	70	67	64	62	60	58	56	54	52	16/32		
	17/32						100	95	89	85	80	77	74	71	68	66	63	61	59	57	55	17/32		
	18/32							100	95	90	85	82	78	75	72	70	67	65	63	60	58	18/32		
	19/32								100	95	90	87	83	80	76	74	71	68	66	64	62	19/32		
	20/32									100	95	90	87	84	80	77	74	72	69	67	65	20/32		
	21/32										100	95	92	88	84	81	78	75	73	70	68	21/32		
	22/32											100	96	92	88	85	82	79	76	74	71	22/32		
23/32												100	96	92	89	86	83	80	77	75	23/32			
24/32													100	96	93	89	86	83	80	78	24/32			
25/32														100	97	93	90	87	84	81	25/32			
26/32															100	97	93	90	87	84	26/32			
27/32																100	96	94	90	87	27/32			
28/32																	100	97	94	91	28/32			
29/32																		100	97	94	29/32			
30/32																			100	97	30/32			
31/32																				100	31/32			

What Is Not Covered by The Limited Warranty?

- Tires on any vehicle registered and normally operated outside the United States of America or Canada.
- Tires which are misapplied due to improper fitment, insufficient Speed Rating and/or Load Range / Ply Rating / Load Index, overload, being undersized/oversized, incorrect rim / wheel size / width.
- Ride related anomalies after the first 2/32" of tread wear.
- Claims for irregular wear, rapid wear or wear out. No mileage warranty is expressed or implied.
- Tires damaged from improper mounting/demounting practices, abuse, misuse, or neglect including but not limited to under inflation, curbing, tire chain damage.
- Tires that have been used in under-inflated conditions.
- Tires improperly repaired or with repairs not conforming to the recommended practices of USTMA – US Tire Manufacturers Association, TRMG - Tread Rubber & Tire Repair Materials Manufacturer's Group, TMC – Technology & Maintenance Council , TIA – Tire Industry Association or with section repairs, or with a self-vulcanizing plug only or patch only.
- Tires in which anything other than air or nitrogen has been used as the support medium.
- Tires injected with liquid balancer or sealant or any other balancing material or tire filler unless an inspection of the tire reveal that the presence of such materials was not the cause of the anomaly.
- Other than tires which have been properly retreaded, tires which have been modified by the addition or removal of material or any tire intentionally altered to change its appearance or performance.
- Tires removed in multiples when only one tire can be claimed, or is suspect of a claim.
- Tires which become unserviceable because of tire operation in excess of tire – wheel / rim manufacturers' specifications and recommendations, including spinning or dynamometer use.
- Tires which emit excessive noise or become unserviceable because of a mechanical irregularity in the vehicle such as, but not limited to, misalignment, defective brakes, defective shock absorbers or struts, or improper rims / wheels.
- Tires damaged by fire, chemical corrosion/contamination, vandalism, wrecks, theft, run while flat, underinflated, overinflated or abused during servicing.
- Tires affected by flat spotting caused by improper transport or storage.
- Tires which become unserviceable because of road hazard injuries (e.g., nails, glass, metal objects) or other penetrations, stone drill, snags, bruises or impact damage.
- Tires that have been improperly stored.
- Mechanical condition of the vehicle. These include issues with the vehicle or wheel / rim such as bent wheel / rim assemblies, misalignment, misuse, negligence, racing, chain damage, or improper mounting or demounting.
- Tires which are intended for on-road service, but have been used in on-off or off-road conditions.
- Tires with excessive ozone or weather cracking as a result of operating environment or improper handling or storage.
- Tires improperly retreaded, including, without limitation: improper or inadequate inspection, preparation, equipment, material, repair.
- Tire dealer/retailer services: mounting, demounting, balancing, tire rotation, alignment costs, the cost of applicable federal, state, and local taxes.
- Loss of time, loss of use of vehicle, inconvenience, incidental or consequential damages.

Enhanced Casing Limited Warranty

In addition to the above workmanship and material warranty, PTGCS warrants its Pirelli branded products listed below to be covered by a seven (7) year or 700,000 total mile usage or three (3) retreads, whichever occurs first. The Enhanced Casing Limited Warranty covers the following products providing they had been used only in Long Haul and Regional Highway Service for the entire life of the casing and during any subsequent retreads.

Products: H89 Plus, H89 Drive Plus, H94 Drive, H94 Coach, R89, R89 Drive, R89 CS Drive, H89 Trailer

Product Sizes: 295/75 R22.5, 285/75R24.5, 11R22.5, 11R24.5, 315/80R22.5

Should any of the covered product's casing be subject to warranty in PTGCS's or their authorized agent sole discretion, PTGCS will provide casing credit at the then prevailing market value for said tire casing but not below the following reference values:

Original Tread	\$60.00
1 st Retread	\$50.00
2 nd Retread	\$40.00
3 rd Retread	\$25.00

You are responsible for all mounting, balancing, disposal fees, servicing costs and all applicable taxes, including FET which will not be included in the pricing for adjustment calculations.

Owner's Responsibilities

The owner is responsible for proper tire care and maintenance. Maintain the correct tire pressure recommended by the vehicle manufacturer by frequently checking the tire pressure with an accurate and calibrated pressure gauge. It is also your obligation to maintain proper alignment and tire/wheel assembly balance. Owner has the responsibility to operate the vehicle within tire/vehicle load capacity and speed limitations as recommended by vehicle manufacturer. Following these recommendations will improve tire life and your satisfaction with the tires.

CAUTION:

Please be aware that it is important to ensure that, before fitting the suggested tires, the fitting is allowed by the technical specifications of the vehicle, the vehicle manufacturer and the relevant homologations. PTGCS does not express any view as to the compatibility of the tire / wheel combination with the technical specifications for the chassis and vehicle. TO MAINTAIN VEHICLE DYNAMICS AND LOAD CARRYING CAPACITY, REPLACEMENT TIRES MUST ALWAYS HAVE TIRE SIZE, LOAD RANGE / PLY RATING / LOAD INDEX AND SPEED RATING THAT EQUAL OR EXCEED THAT OF THE ORIGINAL EQUIPMENT TIRES OF THE VEHICLE.

How To Make A Claim Under This Limited Warranty

To receive consideration for warranty coverage, tire(s) must be returned to any PTGCS authorized dealer. If the PTGCS authorized dealer believes that the tire(s) may be covered by this Limited Warranty, it will submit the tire(s) to PTGCS. PTGCS will then make a determination regarding qualification for coverage under this Limited Warranty.

When making a claim under the terms of this Limited Warranty, you must present the tire along with the proof of purchase to any authorized PTGCS Dealer. Once tires are returned to PTGCS by an authorized PTGCS dealer and warranty credit has been issued, the submitted tires become the property of PTGCS. To locate an authorized PTGCS Dealer in your area, call 1-800-747-3554.

WARRANTY AND REMEDY LIMITATIONS

THIS LIMITED WARRANTY IS THE ONLY EXPRESS WARRANTY GIVEN BY PTGCS, APPLICABLE TO PTGCS BRAND TIRES. PTGCS DOES NOT MAKE ANY OTHER EXPRESS WARRANTY, INCLUDING WITHOUT LIMITATION THE IMPLIED WARRANTIES OF MERCHANTABILITY OR FITNESS FOR A PARTICULAR PURPOSE (WHICH ARE EXPRESSLY DISCLAIMED). PTGCS DOES NOT AUTHORIZE ANY OTHER PERSON, INCLUDING AUTHORIZED PTGCS DEALERS OR VEHICLE MANUFACTURERS, OR VEHICLE DEALERS, TO CHANGE THIS WARRANTY OR CREATE ANY OTHER OBLIGATION IN CONNECTION WITH PTGCS BRAND TIRES.

THE RIGHTS AND REMEDIES AVAILABLE ARE LIMITED TO THOSE RIGHTS AND REMEDIES STATED IN THIS LIMITED WARRANTY. ALL OTHER REMEDIES ARE EXCLUDED. IN NO EVENT SHALL PTGCS BE RESPONSIBLE FOR ANY CONSEQUENTIAL, INCIDENTAL OR SPECIAL DAMAGE(S) IN CONNECTION WITH A PTGCS BRAND TIRE, WHETHER FOR BREACH OF THIS LIMITED WARRANTY, OTHER CONTRACT BREACH, NEGLIGENCE OR OTHER TORT, OR ANY STRICT LIABILITY THEORY.

Conditions And Exclusions:

Unless these limitations are prohibited by state law, this Limited Warranty does not provide compensation for loss of time, loss of use of vehicle, inconvenience, or incidental or consequential damages. Tires/casings presented for claim remain the property of the owner/consumer, and PTGCS and its affiliated companies accepts no responsibility for loss of, or damage to, tires/casings, which are in the custody or control of a PTGCS Truck Tire Retailer or distributor for the purpose of inspection for warranty adjustment. Tires accepted for claim become property of PTGCS. In the event of a disputed claim, the owner/consumer must make the tire available for further inspection. No PTGCS representative, agent, employee or retailer has the authority to make or imply any representation, promise or agreement, which in any way varies the terms of this Limited Warranty. This Limited Warranty applies only in the United States and Canada.

Some states do not allow the exclusion or limitation of incidental or consequential damages, so the above exclusion may not apply to you. This warranty gives you specific legal rights and you may also have other rights which vary from state to state.

If further assistance or information is needed regarding PTGCS Brand tires please contact:

Prometeon Tyre Group Commercial Solutions LLC

Warranty & Commercial Affairs Group

Monday through Friday

8:00 AM to 6:00 PM Eastern Standard Time

1-800-747-3554

consumer.affairs@prometeon.com

