

R89 DRIVE

REGIONAL OPEN SHOULDER DRIVE

PIRELLI

TRUCK BUS AGRO OTR

DESIGNED TO DELIVER MAXIMUM TRACTION, LONG TREAD LIFE AND EXCEPTIONAL RETREADABILITY



MILEAGE



WET HANDLING



FUEL EFFICIENT



PREMIUM PERFORMANCE

LONG TREAD LIFE & EXCELLENT RETREADABILITY

Low rolling resistance tread compound together with under-tread deliver **long tread life** while minimizing the generation of heat from operation, ensuring **excellent retreadability**

EXCELLENT PERFORMANCE IN ALL WEATHER CONDITIONS

Longitudinal and transversal groove geometry as well as casing dimensioning provide **excellent grip** and **traction** in braking and acceleration throughout the life of the tire



OUTSTANDING DURABILITY

The optimized tread pattern geometry ensures protection to the tread blocks, significantly limiting lug base damage and tearing while **improving retreadability**

HIGH MILEAGE

Deep lug tread design delivers high mileage and value for the whole life of the tire

PROMETEAON

TECHNOLOGICAL FEATURES



DLTC

DUAL LAYER TREAD COMPOUND

High Silica Formulation Compound (Pirelli patent)

- Higher Mileage
- Low Rolling Resistance
- Excellent Grip
- Short Braking Distance



3SB

SATT (Pirelli patent)

3 SANDWICH BELTS

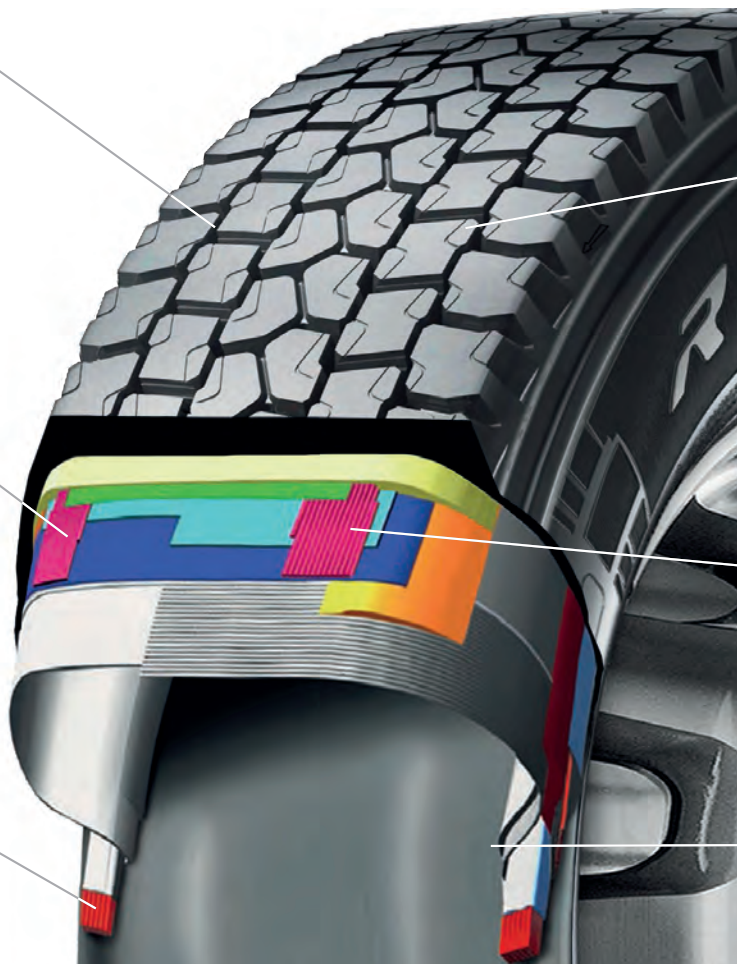
- Enhanced Even Wear
- Extended Tire Life
- Great Retreadability
- Handling



HBW

HEXAGONAL BEAD WIRE

- High flexibility for easy mounting
- Bead thermal stability and durability
- Retreadability



RSR

ROTATED SHOULDER RIBS (Pirelli Patent)

Innovative shoulder tread contour allows correct distribution of footprint contact pressure

- Enhanced even wear
- High mileage



FRC

FULLY RUBBERIZED CORDS

- Great Fatigue Resistance



BWC

BEAD WRAPPED CHAFER

- Increased Resistance
- Excellent Retreadability

R89 DRIVE SIZE RANGE

| TIRE SIZE | PRODUCT NUMBER | LOAD RANGE PLY RATING | LOADED RADIUS IN. (MM) | OVERALL DIAMETER IN. (MM) | OVERALL WIDTH IN. (MM) | APPROVED RIMS IN. | MINIMUM DUAL SPACING IN. (MM) | REVS PER MILE RPM (RPK) | TREAD DEPTH 32NDS (MM) | MAX SPEED MPH (KPH)* | MAX TIRE LOAD | | M+S |
|-------------|----------------|-----------------------|------------------------|---------------------------|------------------------|-------------------|-------------------------------|-------------------------|------------------------|----------------------|------------------------------|----------------------------|-----|
| | | | | | | | | | | | SINGLE LBS. / PSI (KG / KPA) | DUAL LBS. / PSI (KG / KPA) | |
| 245/70R19.5 | 3886500 | H/16 | 15.4 | 33.5 | 9.9 | 7.50, 6.75 | 11.0 | 622 | 19/32 | 81 | 4940/120 | 4675/120 | ✓ |
| | | | (394) | (850) | (252) | | (279) | (389) | (15.0) | (130) | (2240/825) | (2120/825) | |
| 265/70R19.5 | 3886700 | H/16 | 15.9 | 34.3 | 10.6 | 7.50, 8.25 | 11.6 | 607 | 20/32 | 81 | 5510/115 | 5205/115 | ✓ |
| | | | (403) | (872) | (269) | | (295) | (379) | (16.0) | (130) | (2500/790) | (2360/790) | |
| 295/75R22.5 | 3462300 | H/16 | 18.9 | 40.7 | 11.4 | 8.25, 9.00 | 13.2 | 511 | 31/32 | 75 | 7160/123 | 6610/123 | ✓ |
| | | | (480) | (1033) | (290) | | (335) | (320) | (24.0) | (120) | (3250/850) | (3000/850) | |
| 11R22.5 | 3271800 | H/16 | 19.6 | 42.0 | 11.5 | 8.25, 7.50 | 12.5 | 494 | 30/32 | 75 | 6610/120 | 6005/120 | ✓ |
| | | | (497) | (1068) | (293) | | (318) | (308) | (23.5) | (120) | (3000/830) | (2725/830) | |
| 315/80R22.5 | 3886100 | L/20 | 20.0 | 43.1 | 12.5 | 9.00, 9.75 | 13.8 | 483 | 28/32 | 81 | 9370/130 | 8820/130 | ✓ |
| | | | (508) | (1094) | (317) | | (351) | (302) | (22.0) | (130) | (4250/900) | (4000/900) | |

* Exceeding the lawful speed limit is neither recommended nor endorsed.

Note: Rim underlined is measuring rim



October 2019 edition. Prometeon Tyre Group S.r.l. reserves the right to modify the contents of this publication without prior notice. Copyright (c) 2019 Prometeon Tyre Group S.r.l. The PIRELLI logo, SATT™ are trademarks used by Prometeon Tyre Group S.r.l. under license.