

H89 *Plus*

LONG HAUL STEER - ALL POSITION

PIRELLI

TRUCK BUS AGRO OTR

FUEL EFFICIENCY AND HIGH MILEAGE FOR LONG HAUL SERVICE



HIGH
MILEAGE



HIGH
RETREADABILITY



ENERGY
EFFICIENCY



LOW NOISE



PREMIUM PERFORMANCE

ENHANCED STEERING PRECISION AND EXCELLENT PERFORMANCE IN EVERY WEATHER CONDITION

Proprietary SATT Technology
and improved compound
formulation deliver superior
handling and vehicle control
at all times

NEW DECOUPLING GROOVE

A new decoupling groove design
protects the footprint from lateral
efforts to ensure long and even
wear



HIGH MILEAGE PERFORMANCE AND EVEN WEAR

New tread pattern with siped ribs
and widened tread profile provide
an optimized footprint, resulting in
even wear and **long tread life**

FUEL EFFICIENCY AND DURABILITY

New tread and base compounds
deliver long tread life minimizing
heat generation, ensuring excellent
retreadability while complying
with **EPA SmartWay®** verified fuel
efficiency requirements

PROMETON

TECHNOLOGICAL FEATURES



DLTC

DUAL LAYER TREAD COMPOUND

High Silica Formulation Compound (Pirelli patent)

- Higher Mileage
- Low Rolling Resistance
- Excellent Grip
- Short Braking Distance



3SB



(Pirelli patent)

3 SANDWICH BELTS

- Enhanced Even Wear
- Extended Tire Life
- Great Retreadability
- Handling



HBW

HEXAGONAL BEAD WIRE

- High flexibility for easy mounting
- Bead thermal stability and durability
- Retreadability



RSR

ROTATED SHOULDER RIBS (Pirelli Patent)

Innovative shoulder tread contour allows correct distribution of footprint contact pressure

- Enhanced even wear
- High mileage



FRC

FULLY RUBBERIZED CORDS

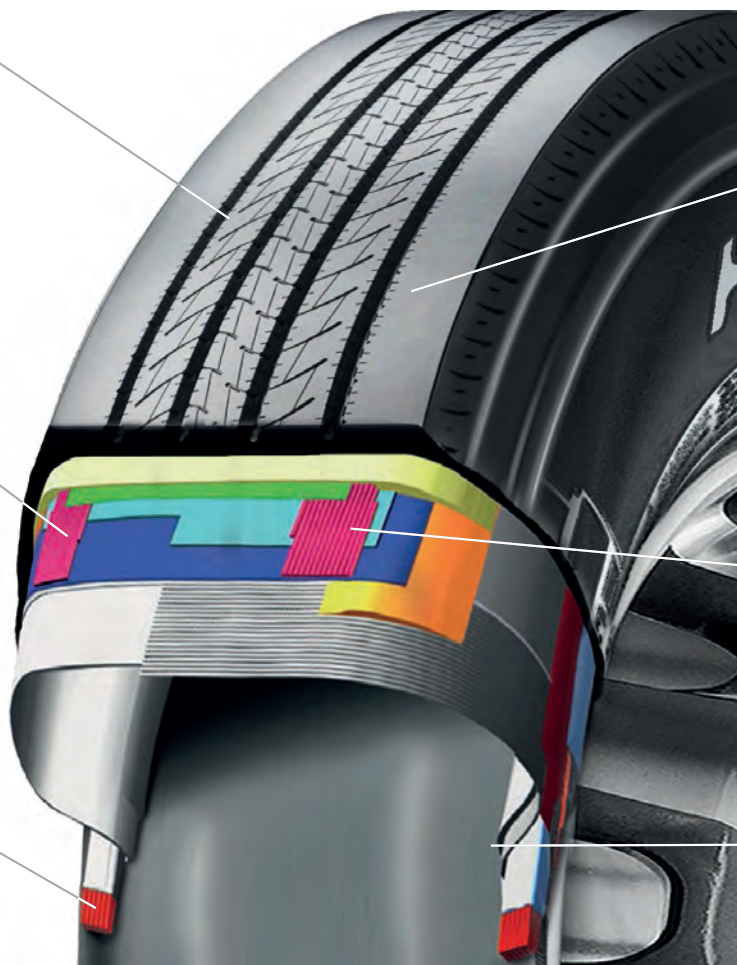
- Great Fatigue Resistance



BWC

BEAD WRAPPED CHAFER

- Increased Resistance
- Excellent Retreadability

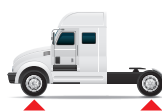


H89 PLUS SIZE RANGE

											MAX TIRE LOAD		SMARTWAY
TIRE SIZE	PRODUCT NUMBER	LOAD RANGE PLY RATING	LOADED RADIUS IN. (MM)	OVERALL DIAMETER IN. (MM)	OVERALL WIDTH IN. (MM)	APPROVED RIMS IN.	MINIMUM DUAL SPACING IN. (MM)	REVS PER MILE RPM (RPK)	TREAD DEPTH 32NDS (MM)	MAX SPEED MPH (KPH)*	SINGLE LBS. / PSI (KG / KPA)	DUAL LBS. / PSI (KG / KPA)	
295/75R22.5	3755900	G/14	18.6	40.0	11.4	8,25, 9.00	13.2	519	18/32	75	6175/110	5675/110	✓
			(473)	(1017)	(290)		(335)	(324)	(14.5)	(120)	(2800/760)	(2575/760)	
	3755800	H/16	18.5	40.0	11.4	8,25, 9.00	13.2	519	18/32	75	7160/123	6610/123	✓
			(472)	(1017)	(290)		(335)	(324)	(14.5)	(120)	(3250/850)	(3000/850)	
11R22.5	3756100	H/16	19.3	41.3	11.6	8,25, 7.50	12.5	504	18/32	75	6610/120	6005/120	✓
			(471)	(1048)	(294)		(318)	(313)	(14.5)	(120)	(3000/830)	(2725/830)	

* Exceeding the lawful speed limit is neither recommended nor endorsed.

Note: Rim underlined is measuring rim



October 2019 edition. Prometeon Tyre Group S.r.l. reserves the right to modify the contents of this publication without prior notice. Copyright (c) 2019 Prometeon Tyre Group S.r.l. The PIRELLI logo, SATT™ are trademarks used by Prometeon Tyre Group S.r.l. under license.